

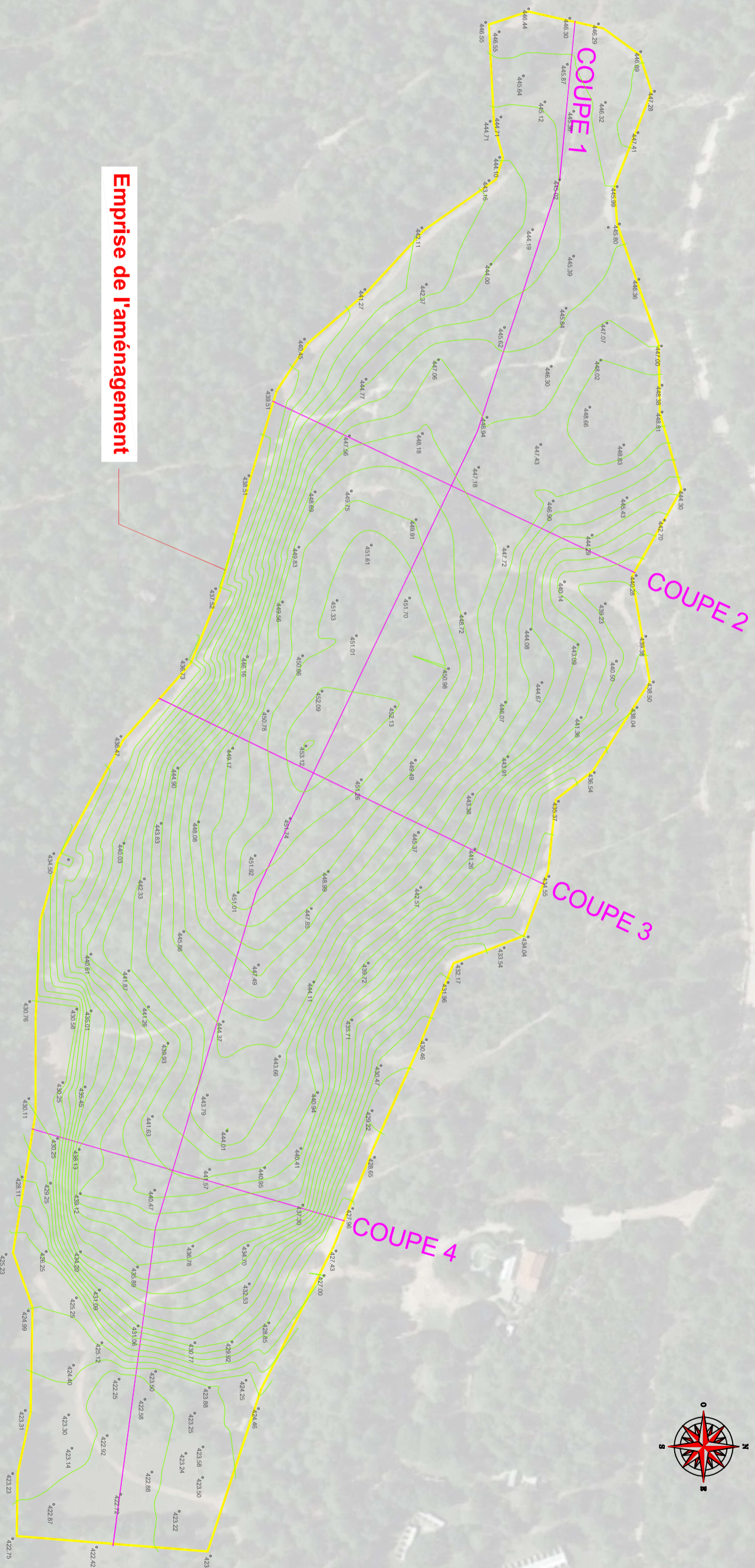
Commune de Méounes-Lès-Montrieux 83136

Domaine du Solitaire

Aménagement agricole

Le 6 Janvier 2022

Echelle : 1/2000 (A3)



Emprise de l'aménagement

COUPE 1

Ouest

Est



Echelle X : 1/2500
Echelle Z : 1/2500

Plan Comp : 405,00

| Projet | Terrain | |
|--------|---------|--------|
| | D | Z |
| | 0.58 | 446.30 |
| | 42.89 | 446.30 |
| | 43.47 | 445.93 |
| | 29.85 | 445.70 |
| | 73.33 | 445.19 |
| | 86.06 | 445.02 |
| | 38.18 | 444.76 |
| | 124.24 | 444.43 |
| | 27.16 | 444.45 |
| | 151.40 | 444.45 |
| | 155.39 | 444.43 |
| | 29.22 | 444.43 |
| | 184.62 | 444.26 |
| | 190.25 | 444.26 |
| | 53.44 | 444.26 |
| | 243.69 | 444.26 |
| | 257.98 | 444.26 |
| | 265.72 | 444.26 |
| | 45.84 | 444.26 |
| | 311.56 | 444.26 |
| | 313.05 | 444.26 |
| | 325.42 | 444.26 |
| | 332.29 | 444.26 |
| | 333.52 | 444.26 |
| | 36.67 | 444.26 |
| | 370.18 | 444.26 |
| | 25.94 | 444.26 |
| | 396.12 | 444.26 |
| | 25.55 | 444.26 |
| | 421.67 | 444.26 |
| | 429.61 | 444.26 |
| | 440.25 | 444.26 |
| | 15.47 | 444.26 |
| | 55.72 | 444.26 |
| | 25.56 | 444.26 |
| | 481.28 | 444.26 |
| | 482.77 | 444.26 |
| | 26.76 | 444.26 |
| | 509.54 | 444.26 |
| | 19.30 | 444.26 |
| | 28.84 | 444.26 |
| | 16.53 | 444.26 |
| | 45.39 | 444.26 |
| | 16.94 | 444.26 |
| | 556.89 | 444.26 |
| | 16.94 | 444.26 |
| | 73.83 | 444.26 |
| | 75.80 | 444.26 |
| | 592.42 | 444.26 |
| | 604.06 | 444.26 |
| | 28.44 | 444.26 |
| | 32.51 | 444.26 |
| | 35.54 | 444.26 |
| | 25.74 | 444.26 |
| | 661.27 | 444.26 |
| | 56.82 | 444.26 |
| | 718.10 | 444.26 |

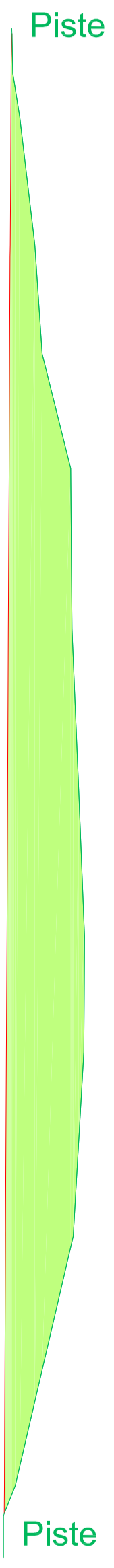
COUPE 2

Nord

Sud

Echelle X : 1/600
Echelle Z : 1/600

Plan Comp : 436.00



Terrain

Projet

| D | Z |
|--------|--------|
| 0.00 | 440.37 |
| 5.34 | 440.48 |
| 10.46 | 441.29 |
| 15.10 | |
| 25.56 | 443.09 |
| 38.42 | 443.94 |
| 51.89 | 447.30 |
| 70.83 | 447.44 |
| 107.13 | 448.93 |
| 120.72 | 448.84 |
| 142.42 | 447.59 |
| 171.90 | 440.76 |
| 179.22 | 439.40 |

COUPE 3

Nord

Sud

Piste

Piste

Echelle X : 1/600
Echelle Z : 1/600
Plan Comp : 431.00

| Terrain | |
|---------|--------|
| Z | D |
| 434.48 | 0.00 |
| 434.51 | 4.57 |
| 433.99 | 29.26 |
| 441.02 | 33.83 |
| 441.30 | 35.38 |
| 445.10 | 59.05 |
| 445.88 | 62.87 |
| 447.42 | 72.60 |
| 450.92 | 93.66 |
| 451.37 | 99.08 |
| 452.72 | 121.21 |
| 450.67 | 141.50 |
| 449.60 | 150.71 |
| 446.34 | 159.18 |
| 440.36 | 176.88 |
| 436.62 | 187.04 |
| 436.61 | 192.32 |

| Projet | |
|--------|--------|
| Z | D |
| 434.49 | 0.49 |
| 433.99 | 15.84 |
| 435.46 | 141.50 |
| 436.61 | 191.79 |

| Projet | |
|--------|--------|
| D | Z |
| 15.35 | 434.49 |
| 125.86 | 435.46 |
| 50.29 | 436.61 |

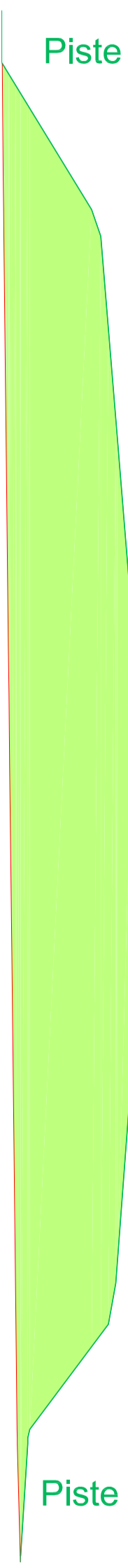
COUPE 4

Nord

Sud

Echelle X : 1/500
Echelle Z : 1/500

Plan Comp : 425.00



Terrain

Projet

| Terrain | |
|---------|--------|
| D | Z |
| 0.00 | 427.79 |
| 4.92 | 427.78 |
| 13.88 | |
| 18.80 | 436.29 |
| 21.31 | 437.15 |
| 25.52 | |
| 38.83 | |
| 60.14 | 440.32 |
| 64.54 | 440.88 |
| 7.03 | |
| 71.56 | 441.22 |
| 17.89 | |
| 89.46 | 440.87 |
| 30.78 | |
| 120.24 | 438.56 |
| 124.11 | 437.86 |
| 3.87 | |
| 9.92 | |
| 134.03 | 430.43 |
| 135.38 | 430.24 |
| 11.18 | |
| 146.57 | 429.54 |

| Projet | |
|--------|--------|
| D | Z |
| 0.47 | 427.79 |
| 145.53 | 429.36 |