


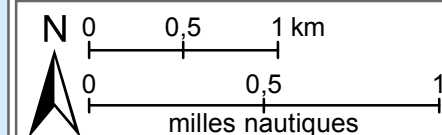
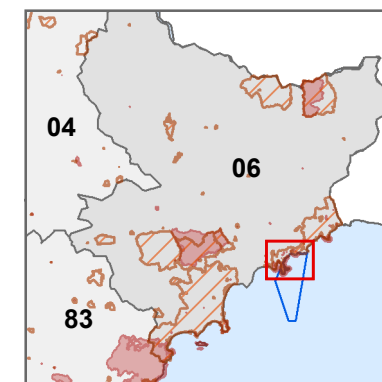


-  Site Natura 2000 Cap Ferrat
-  Sites classés
-  Sites inscrits

Localisation :



Sources :
Site Natura 2000 : MNHN, 2013
Sites classés et inscrits : DREAL PACA, 2012
Bathymétrie : SHOM, 2006, Andromède Océanologie, 2007

Document de travail
(ne pas utiliser pour la navigation)