



**COMPAGNIE CONCESSIONNAIRE  
DE PORT LA GALÈRE**

**PORT LA GALÈRE**

**CAHIER DE COUPES**

**PROJET ZONES EST ET SUD**

REFERENCE FICHIER

647 - 1732

ECHELLE

-

	MODIFICATIONS	Phase	DATE
0	Première diffusion		18/05/2018
A	mise à jour		07/01/2022
B			
C			
D			
E			
F			

Dessin : FAR

Contrôle : CVE

Appro. : ILE

1 7 3 2 P R O P L A N 0 0 3 A

Ref. dwg : \ACRI-IN\THEOULES SUR MER\647 - Port La Galère\

Maître d'oeuvre :

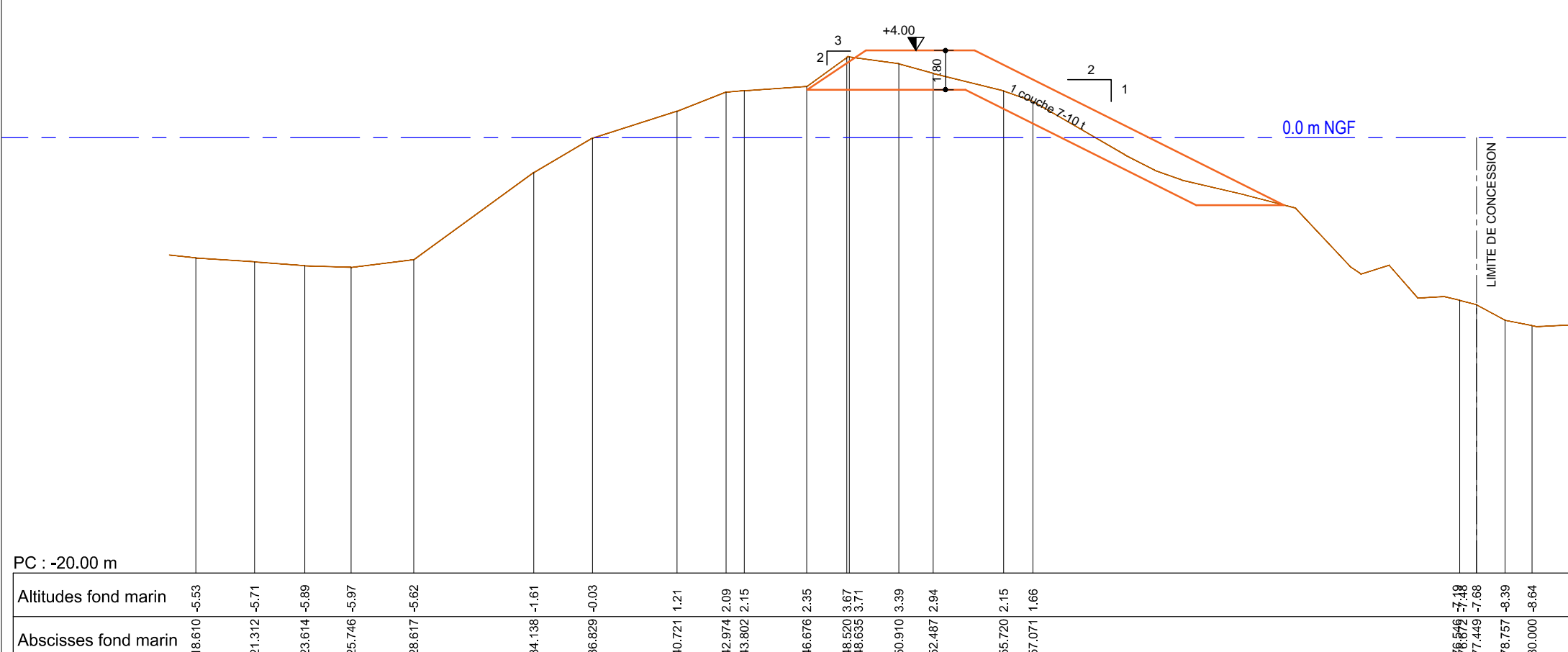


260 route du Pin Montard  
BP 234  
06904 Sophia-Antipolis CEDEX  
FRANCE

Tél : +33 (0)4.92.96.29.00  
Fax : +33 (0)4.93.95.80.98  
E-mail : info@acri-in.fr  
Web : http://www.acri-in.fr

# PROFIL AA

Echelle : 1/250

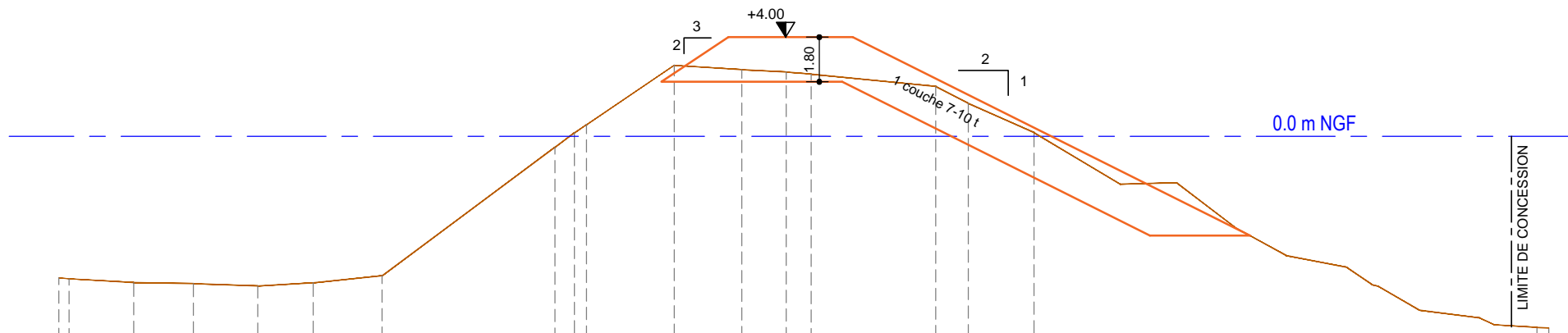


PC : -20.00 m

Altitudes fond marin	18.610	21.312	23.614	25.746	28.617	34.138	36.829	40.721	42.974	43.802	46.676	48.520	48.635	50.910	52.487	55.720	57.071	76.546	77.449	78.757	80.000
Abscisses fond marin	-5.53	-5.71	-5.89	-5.97	-5.62	-1.61	-0.03	1.21	2.09	2.15	2.35	3.67	3.71	3.39	2.94	2.15	1.66	-7.18	-7.68	-8.39	-8.64

# PROFIL BB

Echelle : 1/250

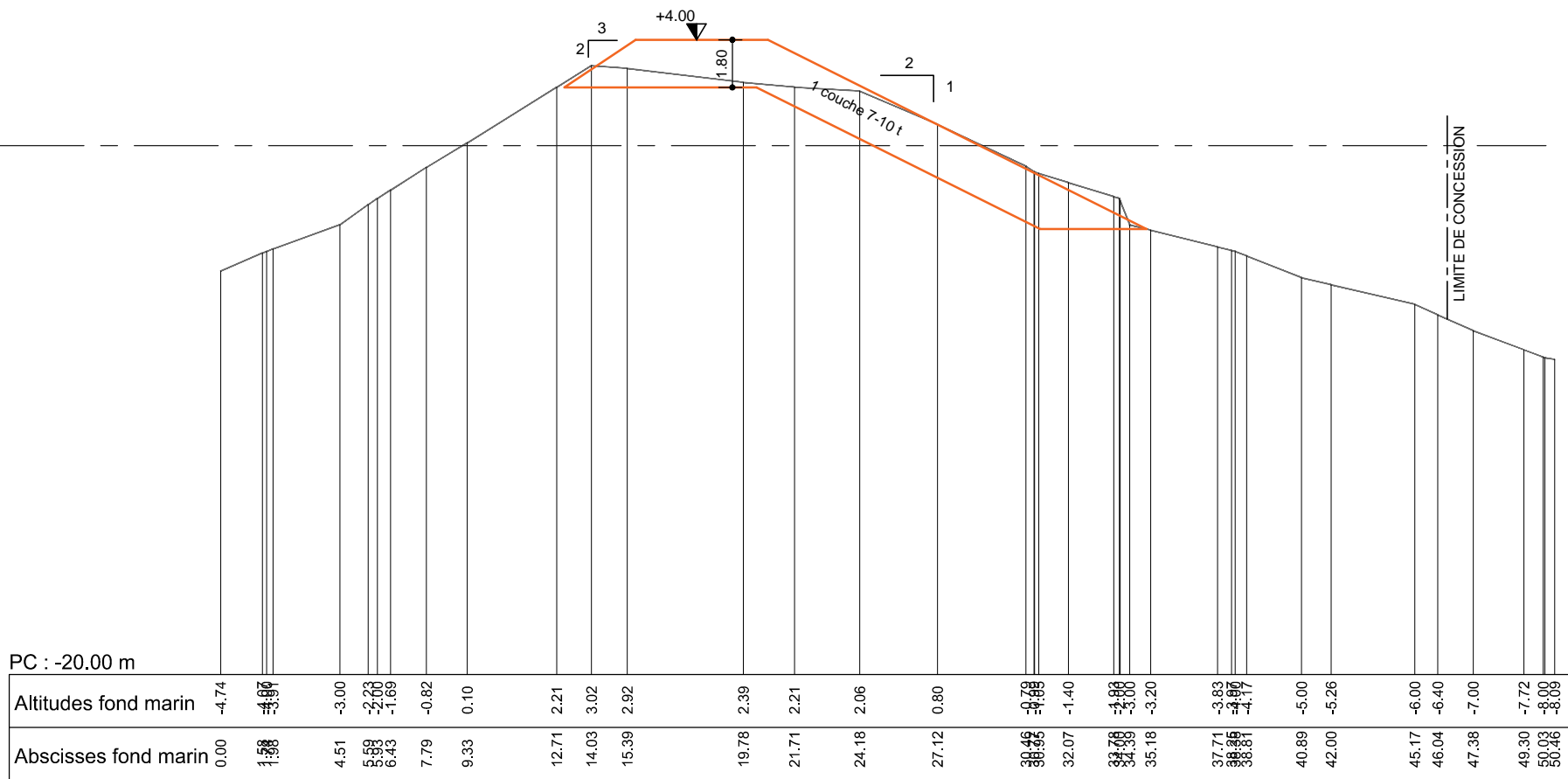


PC : -14.00 m

Altitudes fond marin	-5.74	-5.89	-5.93	-6.03	-5.90	-5.62		-0.44	0.14	0.48		2.87	2.69	2.60	2.51		2.01	1.34		0.15	-5.17		-7.47	-7.72
Abscisses fond marin	-0.000	3.012	5.422	8.016	10.241	13.020		19.977	20.762	21.251		24.784	27.501	29.297	30.298		35.317	36.623		39.276	39.673		59.528	60.000

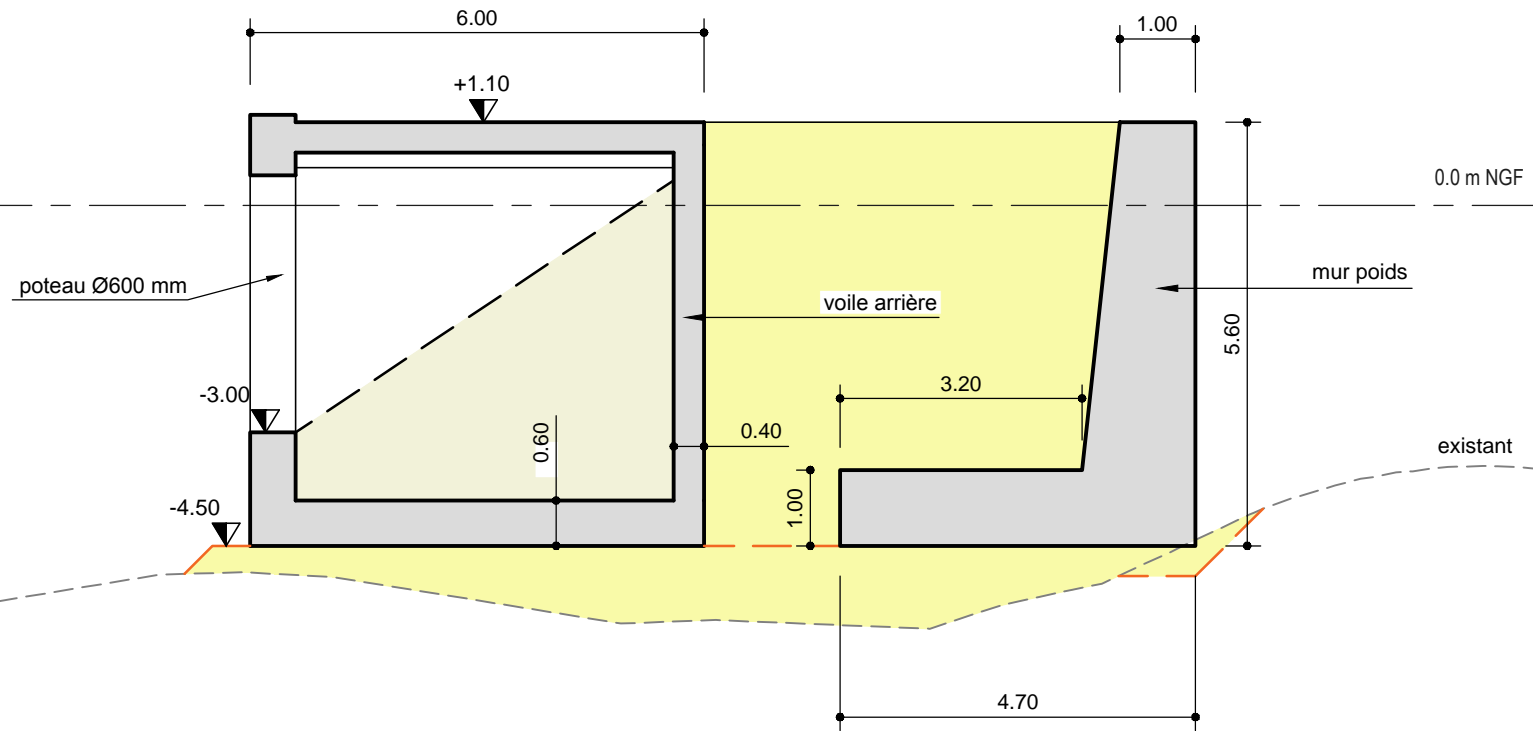
# PROFIL CC

Echelle : 1/250



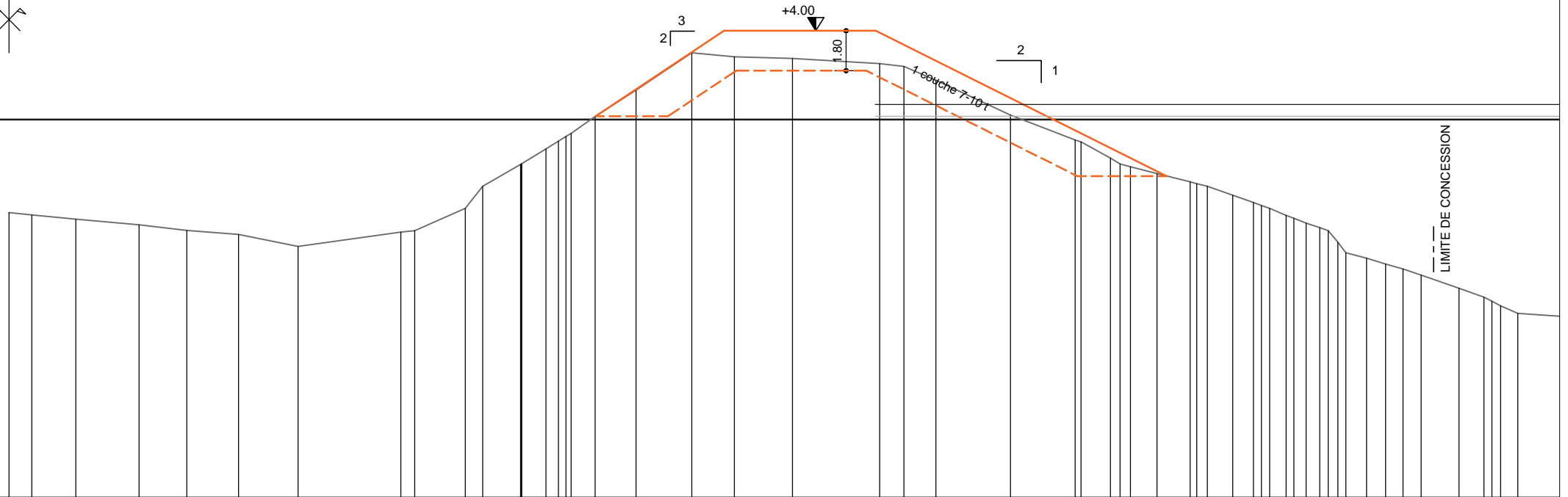
# COUPE DD

Echelle : 1/100



# PROFIL EE

Echelle : 1/250

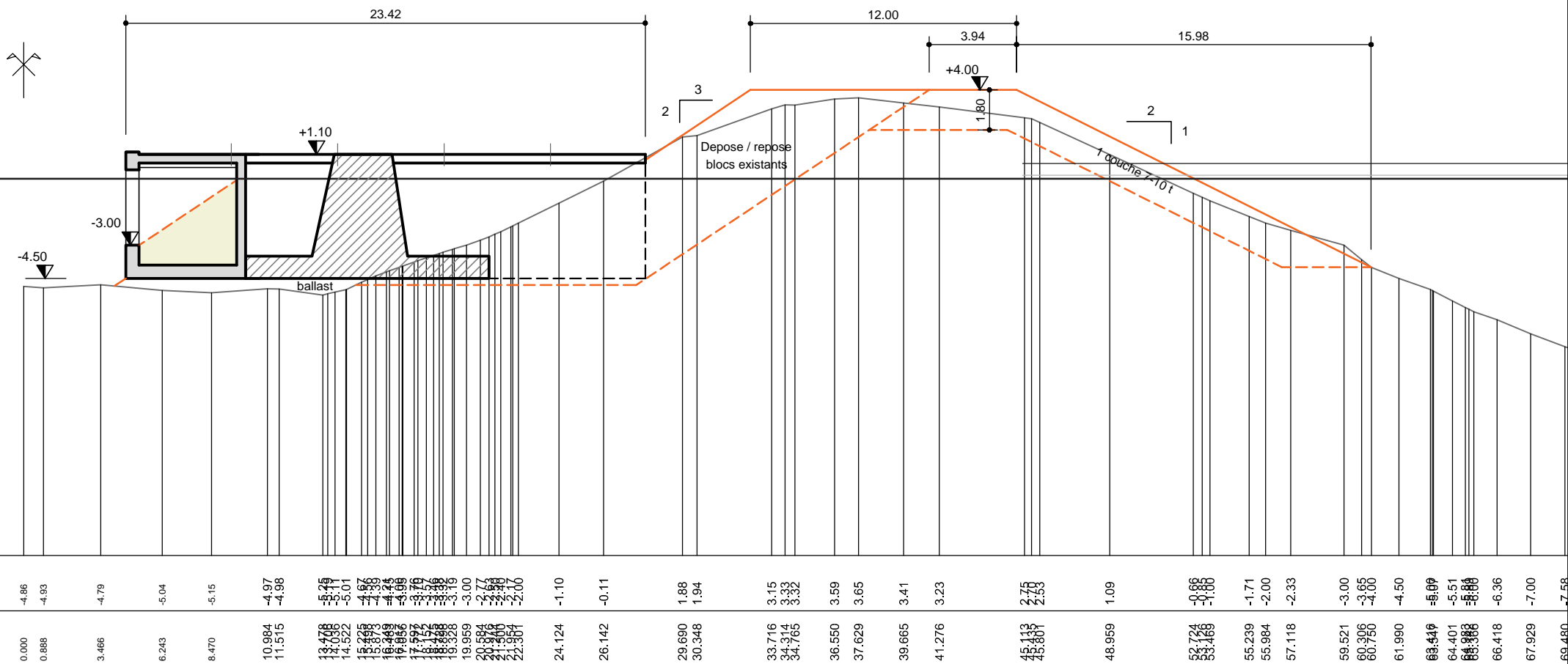


-4.19	-4.30	-4.49	-4.74	-5.00	-5.17	-5.72	-5.07	-5.00	-4.00	-3.00	-2.02	-1.32	-0.98	-0.62	0.13	1.33	3.00	2.82	2.75	2.52	2.39	1.77	0.20	-0.86	-1.74	-2.00	-2.13	-2.44	-2.81	-3.00	-3.41	-3.74	-4.00	-4.31	-4.66	-4.87	-5.00	-5.53	-6.00	-6.24	-6.51	-6.73	-7.00	-7.60	-8.00	-8.18	-8.39	-8.73		
-0.000	1.024	3.001	5.848	8.005	10.327	13.008	17.634	18.260	20.530	21.310	23.022	24.161	24.723	25.282	26.378	28.214	30.718	32.640	35.252	38.175	40.266	41.708	45.064	48.238	49.558	49.988	50.464	51.655	53.145	53.445	53.918	55.059	55.992	56.667	56.722	57.468	58.360	58.973	59.356	59.792	60.153	61.081	61.946	62.724	63.540	65.247	66.370	66.720	67.121	67.887

LIMITE DE CONCESSION

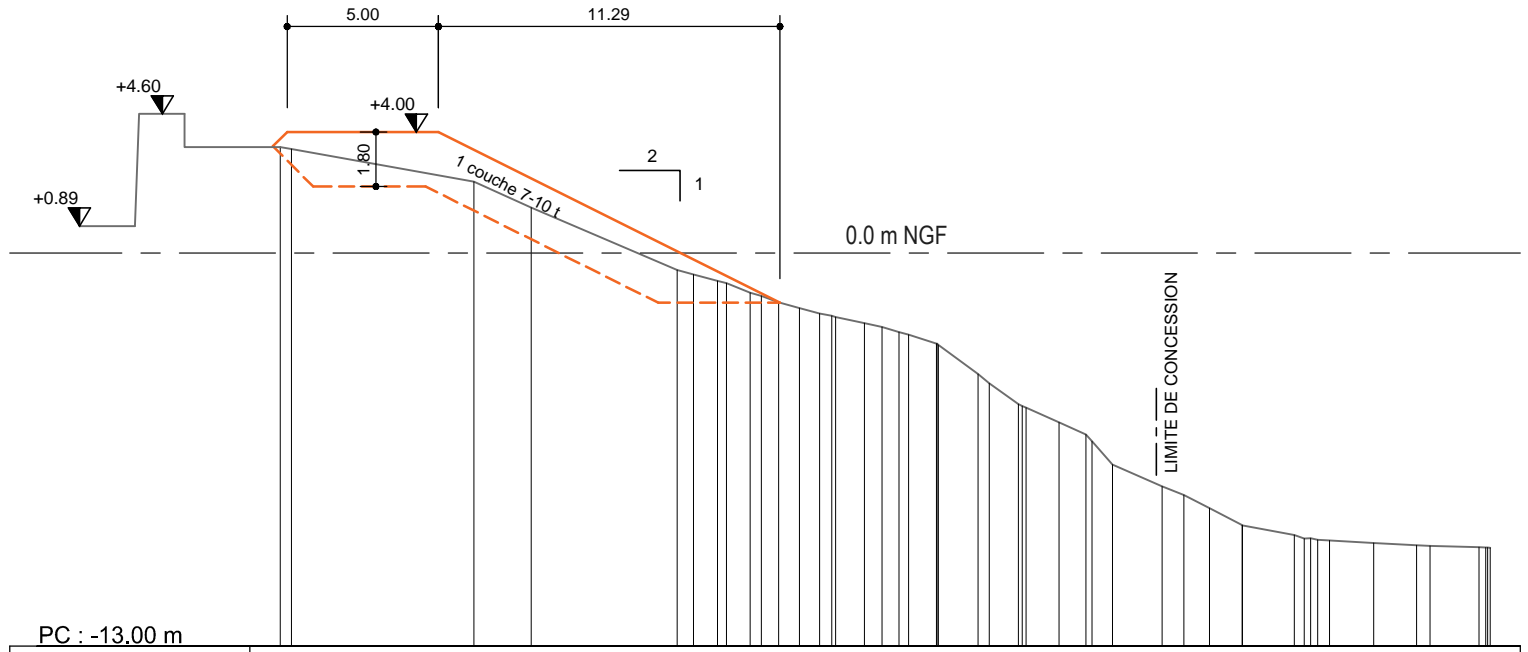
# PROFIL FF

Echelle : 1/250



# PROFIL GG

Echelle : 1/250



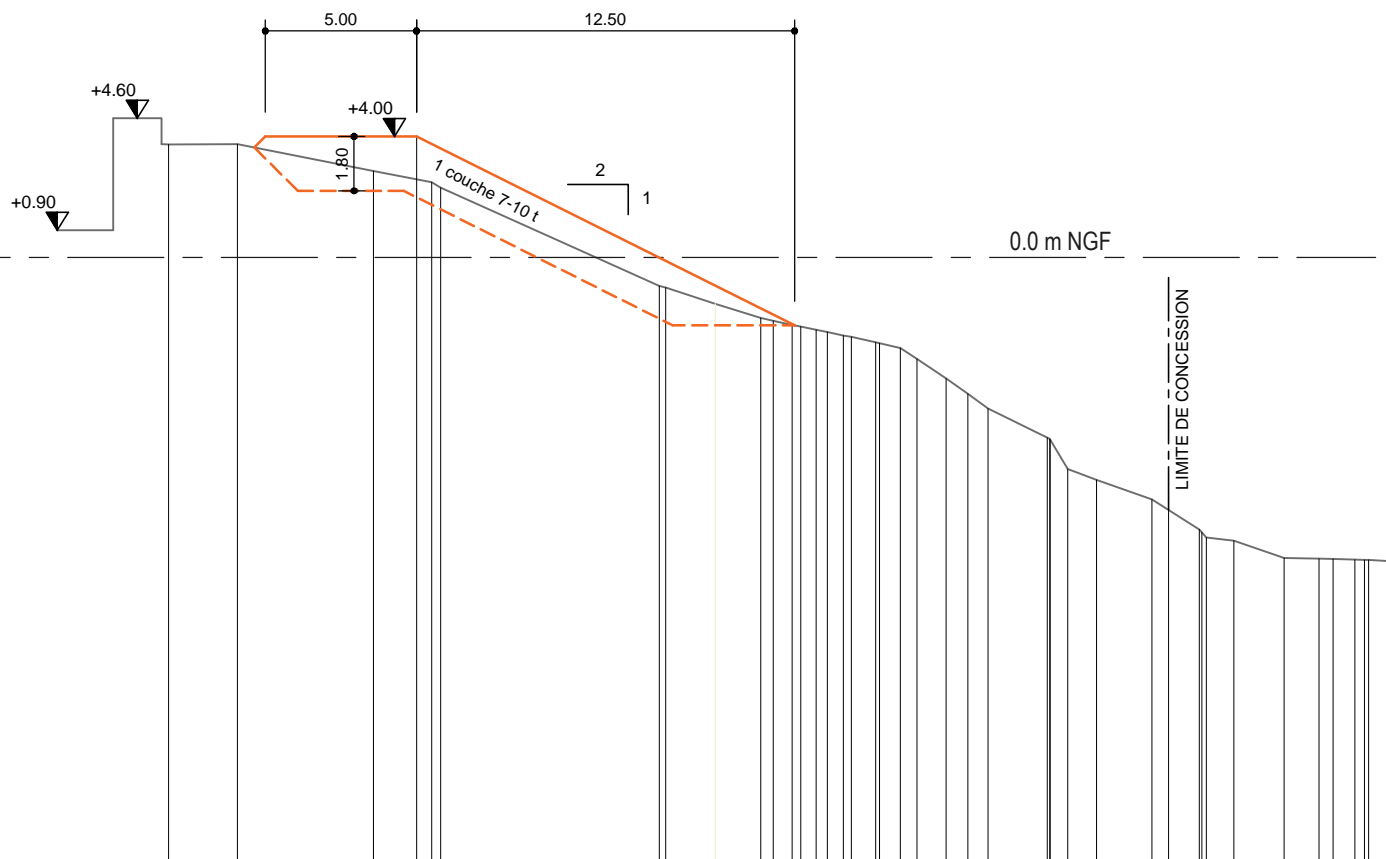
PC : -13.00 m

Altitudes fond marin	3.50		2.35	1.50	-0.56	-0.71	-0.86	-1.01	-1.16	-1.31	-1.46	-1.61	-1.76	-1.91	-2.06	-2.21	-2.36	-2.51	-2.66	-2.81	-2.96	-3.11	-3.26	-3.41	-3.56	-3.71	-3.86	-4.01	-4.16	-4.31	-4.46	-4.61	-4.76	-4.91	-5.06	-5.21	-5.36	-5.51	-5.66	-5.81	-5.96	-6.11	-6.26	-6.41	-6.56	-6.71	-6.86	-7.01	-7.16	-7.31	-7.46	-7.61	-7.76	-7.91	-8.06	-8.21	-8.36	-8.51	-8.66	-8.81	-8.96	-9.11	-9.26	-9.41	-9.56	-9.71	-9.86	-10.01	-10.16	-10.31	-10.46	-10.61	-10.76	-10.91	-11.06	-11.21	-11.36	-11.51	-11.66	-11.81	-11.96	-12.11	-12.26	-12.41	-12.56	-12.71	-12.86	-13.01	-13.16	-13.31	-13.46	-13.61	-13.76	-13.91	-14.06	-14.21	-14.36	-14.51	-14.66	-14.81	-14.96	-15.11	-15.26	-15.41	-15.56	-15.71	-15.86	-16.01	-16.16	-16.31	-16.46	-16.61	-16.76	-16.91	-17.06	-17.21	-17.36	-17.51	-17.66	-17.81	-17.96	-18.11	-18.26	-18.41	-18.56	-18.71	-18.86	-19.01	-19.16	-19.31	-19.46	-19.61	-19.76	-19.91	-20.06	-20.21	-20.36	-20.51	-20.66	-20.81	-20.96	-21.11	-21.26	-21.41	-21.56	-21.71	-21.86	-22.01	-22.16	-22.31	-22.46	-22.61	-22.76	-22.91	-23.06	-23.21	-23.36	-23.51	-23.66	-23.81	-23.96	-24.11	-24.26	-24.41	-24.56	-24.71	-24.86	-25.01	-25.16	-25.31	-25.46	-25.61	-25.76	-25.91	-26.06	-26.21	-26.36	-26.51	-26.66	-26.81	-26.96	-27.11	-27.26	-27.41	-27.56	-27.71	-27.86	-28.01	-28.16	-28.31	-28.46	-28.61	-28.76	-28.91	-29.06	-29.21	-29.36	-29.51	-29.66	-29.81	-29.96	-30.11	-30.26	-30.41	-30.56	-30.71	-30.86	-31.01	-31.16	-31.31	-31.46	-31.61	-31.76	-31.91	-32.06	-32.21	-32.36	-32.51	-32.66	-32.81	-32.96	-33.11	-33.26	-33.41	-33.56	-33.71	-33.86	-34.01	-34.16	-34.31	-34.46	-34.61	-34.76	-34.91	-35.06	-35.21	-35.36	-35.51	-35.66	-35.81	-35.96	-36.11	-36.26	-36.41	-36.56	-36.71	-36.86	-37.01	-37.16	-37.31	-37.46	-37.61	-37.76	-37.91	-38.06	-38.21	-38.36	-38.51	-38.66	-38.81	-38.96	-39.11	-39.26	-39.41	-39.56	-39.71	-39.86	-40.01	-40.16	-40.31	-40.46	-40.61	-40.76	-40.91	-41.06	-41.21	-41.36	-41.51	-41.66	-41.81	-41.96	-42.11	-42.26	-42.41	-42.56	-42.71	-42.86	-43.01	-43.16	-43.31	-43.46	-43.61	-43.76	-43.91	-44.06	-44.21	-44.36	-44.51	-44.66	-44.81	-44.96	-45.11	-45.26	-45.41	-45.56	-45.71	-45.86	-46.01	-46.16	-46.31	-46.46	-46.61	-46.76	-46.91	-47.06	-47.21	-47.36	-47.51	-47.66	-47.81	-47.96	-48.11	-48.26	-48.41	-48.56	-48.71	-48.86	-49.01	-49.16	-49.31	-49.46	-49.61	-49.76	-49.91	-50.06	-50.21	-50.36	-50.51	-50.66	-50.81	-50.96	-51.11	-51.26	-51.41	-51.56	-51.71	-51.86	-52.01	-52.16	-52.31	-52.46	-52.61	-52.76	-52.91	-53.06	-53.21	-53.36	-53.51	-53.66	-53.81	-53.96	-54.11	-54.26	-54.41	-54.56	-54.71	-54.86	-55.01	-55.16	-55.31	-55.46	-55.61	-55.76	-55.91	-56.06	-56.21	-56.36	-56.51	-56.66	-56.81	-56.96	-57.11	-57.26	-57.41	-57.56	-57.71	-57.86	-58.01	-58.16	-58.31	-58.46	-58.61	-58.76	-58.91	-59.06	-59.21	-59.36	-59.51	-59.66	-59.81	-59.96	-60.11	-60.26	-60.41	-60.56	-60.71	-60.86	-61.01	-61.16	-61.31	-61.46	-61.61	-61.76	-61.91	-62.06	-62.21	-62.36	-62.51	-62.66	-62.81	-62.96	-63.11	-63.26	-63.41	-63.56	-63.71	-63.86	-64.01	-64.16	-64.31	-64.46	-64.61	-64.76	-64.91	-65.06	-65.21	-65.36	-65.51	-65.66	-65.81	-65.96	-66.11	-66.26	-66.41	-66.56	-66.71	-66.86	-67.01	-67.16	-67.31	-67.46	-67.61	-67.76	-67.91	-68.06	-68.21	-68.36	-68.51	-68.66	-68.81	-68.96	-69.11	-69.26	-69.41	-69.56	-69.71	-69.86	-70.01	-70.16	-70.31	-70.46	-70.61	-70.76	-70.91	-71.06	-71.21	-71.36	-71.51	-71.66	-71.81	-71.96	-72.11	-72.26	-72.41	-72.56	-72.71	-72.86	-73.01	-73.16	-73.31	-73.46	-73.61	-73.76	-73.91	-74.06	-74.21	-74.36	-74.51	-74.66	-74.81	-74.96	-75.11	-75.26	-75.41	-75.56	-75.71	-75.86	-76.01	-76.16	-76.31	-76.46	-76.61	-76.76	-76.91	-77.06	-77.21	-77.36	-77.51	-77.66	-77.81	-77.96	-78.11	-78.26	-78.41	-78.56	-78.71	-78.86	-79.01	-79.16	-79.31	-79.46	-79.61	-79.76	-79.91	-80.06	-80.21	-80.36	-80.51	-80.66	-80.81	-80.96	-81.11	-81.26	-81.41	-81.56	-81.71	-81.86	-82.01	-82.16	-82.31	-82.46	-82.61	-82.76	-82.91	-83.06	-83.21	-83.36	-83.51	-83.66	-83.81	-83.96	-84.11	-84.26	-84.41	-84.56	-84.71	-84.86	-85.01	-85.16	-85.31	-85.46	-85.61	-85.76	-85.91	-86.06	-86.21	-86.36	-86.51	-86.66	-86.81	-86.96	-87.11	-87.26	-87.41	-87.56	-87.71	-87.86	-88.01	-88.16	-88.31	-88.46	-88.61	-88.76	-88.91	-89.06	-89.21	-89.36	-89.51	-89.66	-89.81	-89.96	-90.11	-90.26	-90.41	-90.56	-90.71	-90.86	-91.01	-91.16	-91.31	-91.46	-91.61	-91.76	-91.91	-92.06	-92.21	-92.36	-92.51	-92.66	-92.81	-92.96	-93.11	-93.26	-93.41	-93.56	-93.71	-93.86	-94.01	-94.16	-94.31	-94.46	-94.61	-94.76	-94.91	-95.06	-95.21	-95.36	-95.51	-95.66	-95.81	-95.96	-96.11	-96.26	-96.41	-96.56	-96.71	-96.86	-97.01	-97.16	-97.31	-97.46	-97.61	-97.76	-97.91	-98.06	-98.21	-98.36	-98.51	-98.66	-98.81	-98.96	-99.11	-99.26	-99.41	-99.56	-99.71	-99.86	-100.01
Abscisses fond marin	0.99		6.40	8.30	13.13	13.66	14.46	15.53	16.48	17.16	17.84	18.38	18.88	19.31	19.89	20.48	21.70	23.07	23.44	23.60	24.00	25.75	26.63	27.52	29.16	29.87	30.73	31.80	33.53	34.07	34.48	34.80	36.15	37.57	38.02	38.66	39.66	40.66	41.66	42.66	43.66	44.66	45.66	46.66	47.66	48.66	49.66	50.66	51.66	52.66	53.66	54.66	55.66	56.66	57.66	58.66	59.66	60.66	61.66	62.66	63.66	64.66	65.66	66.66	67.66	68.66	69.66	70.66	71.66	72.66	73.66	74.66	75.66	76.66	77.66	78.66	79.66	80.66	81.66	82.66	83.66	84.66	85.66	86.66	87.66	88.66	89.66	90.66	91.66	92.66	93.66	94.66	95.66	96.66	97.66	98.66	99.66	100.66																																																																																																																																																																																																																																																																																																																																																																																																																																																																																																																																																																																										



# PROFIL HH

Echelle : 1/250

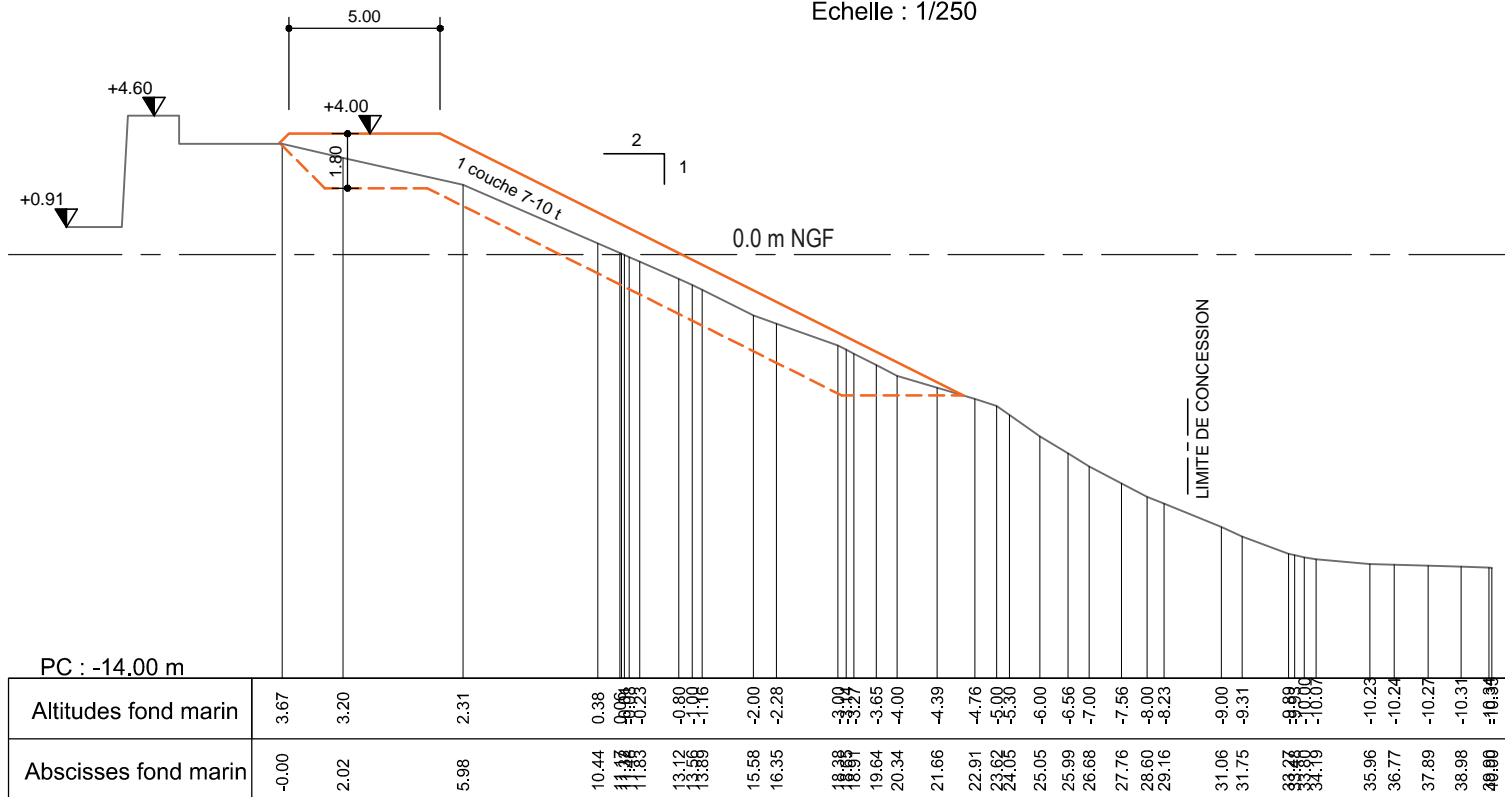


PC : -20.00 m

Altitudes fond marin	3.75	3.75	2.86	2.48	-0.86	-1.54	-2.00	-2.23	-2.39	-2.47	-2.68	-2.84	-3.00	-3.36	-4.00	-4.51	-5.00	-6.02	-7.00	-7.36	-8.00	-8.35	-9.08	-9.37	-9.94	-9.96	-9.97	-9.99	-10.00	-10.05	-10.07
Abscisses fond marin	41.48	38.89	34.40	32.47	24.93	23.09	21.59	20.59	19.76	18.86	17.66	16.97	16.42	15.46	14.74	14.07	12.02	11.44	10.48	8.66	8.11	6.88	5.95	4.28	3.13	2.67	1.95	1.49	0.88	0.88	0.88

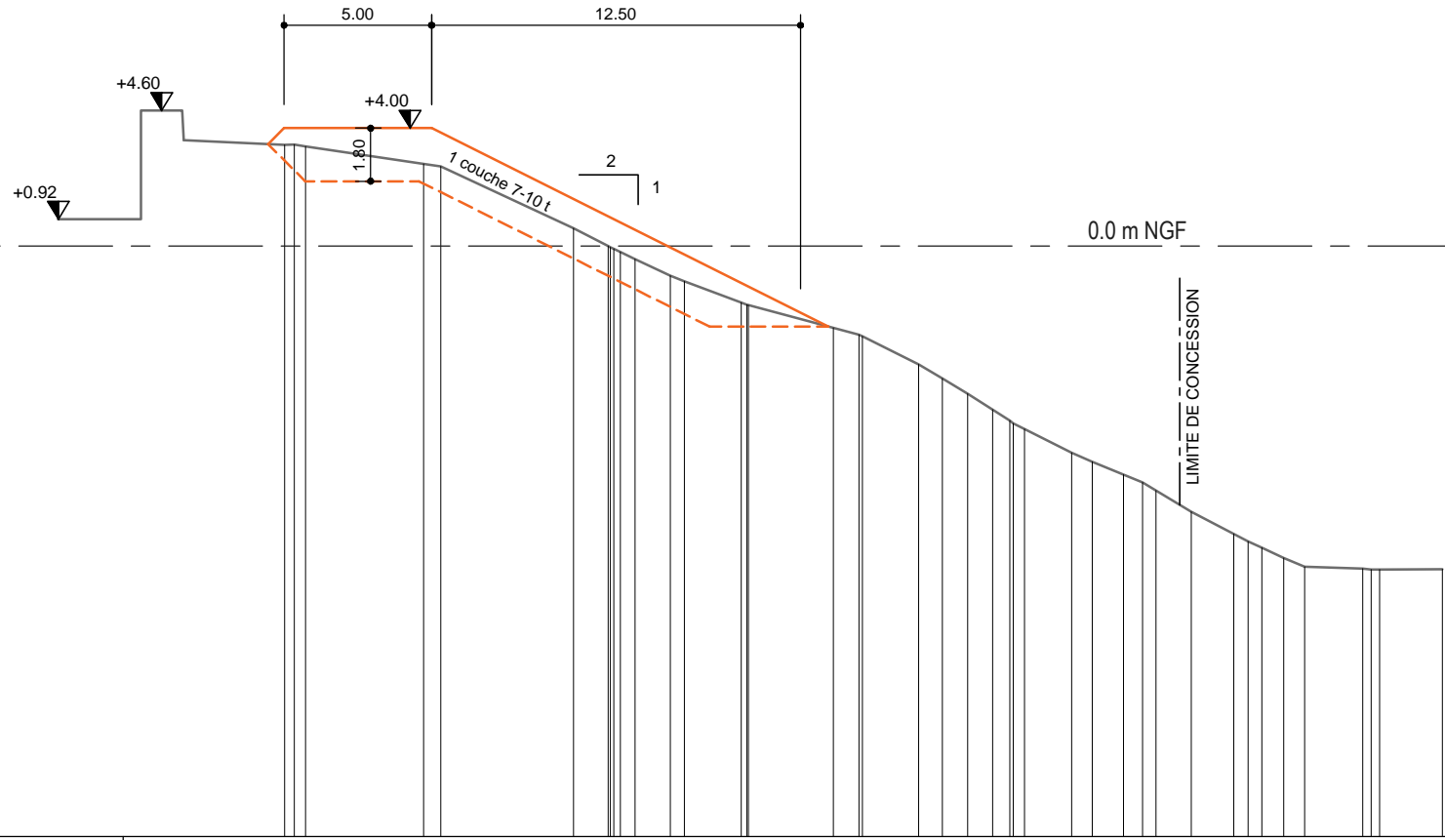
# PROFIL II

Echelle : 1/250



# PROFIL JJ

Echelle : 1/250

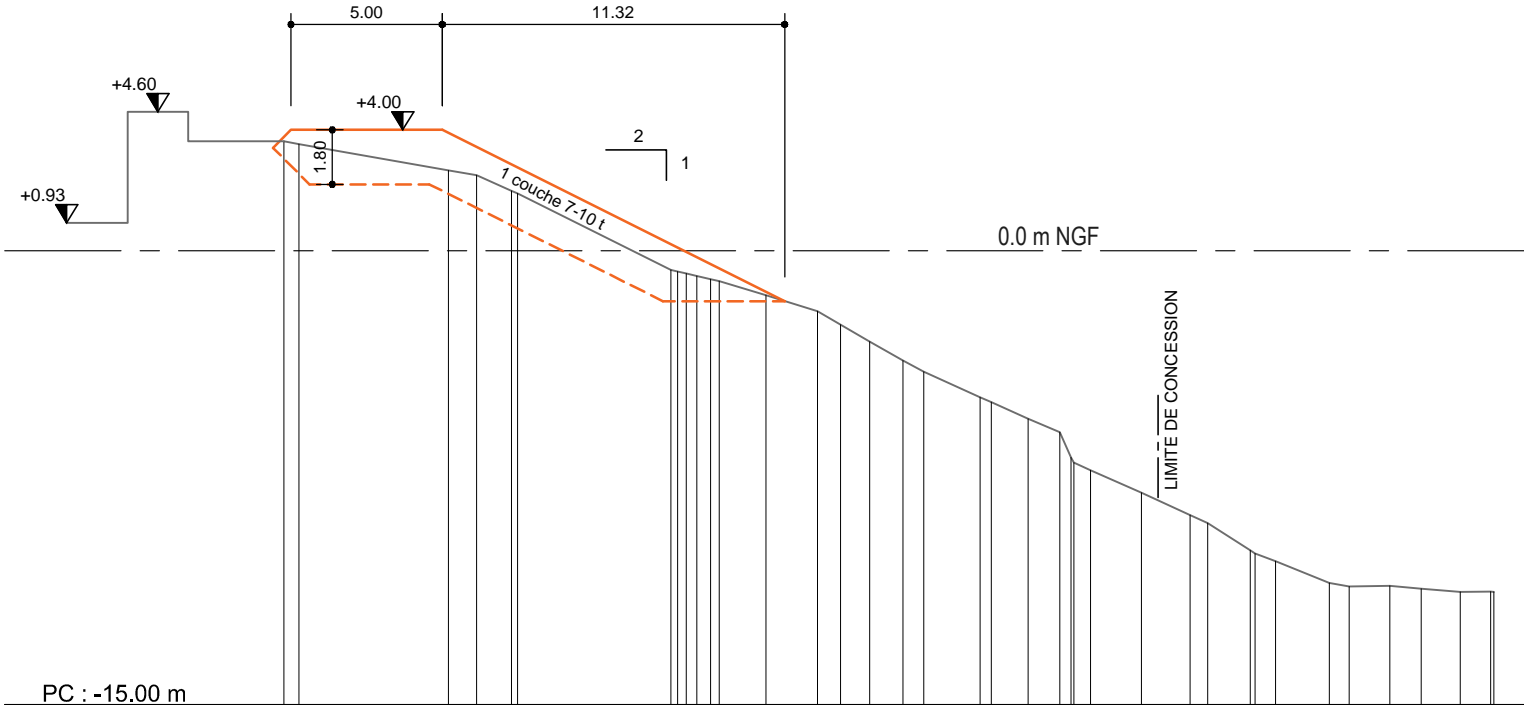


PC : -20.00 m

Altitudes TN	3.59	3.43	3.44	3.38	2.79	2.70	0.60	0.00	-0.20	-0.44	-1.00	-1.19	-3.00	-2.77	-3.00	-4.00	-4.48	-5.00	-5.54	-5.91	-6.19	-7.00	-7.31	-7.74	-8.00	-8.28	-8.00	-9.75	-10.00	-10.22	-10.57	-10.86	-10.92	-10.95	-10.95	-10.94
Distances à l'axe TN	-0.00	3.27	3.80	4.18	8.18	8.76	13.26	14.43	14.85	15.35	16.54	17.01	21.00	22.06	22.94	24.95	25.75	26.61	27.46	28.04	28.54	30.13	30.84	31.89	32.55	33.00	34.19	35.63	36.12	36.58	37.32	38.04	40.00	40.20	40.57	42.70

# PROFIL KK

Echelle : 1/250



PC : -15.00 m

Altitudes fond marin	3.62		2.66	2.50	1.98		-1.47	-2.00	-2.44	-3.00	-3.62	-4.00		-4.84	-5.55	-6.00	-6.83	-7.25		-8.00	-8.73	-9.00		-9.60	-10.26		-10.88	-11.10	-11.07	-11.17	-11.27	-11.27		
Abscisses fond marin	0.00	0.50	5.44	6.37	7.52		13.79	13.79	13.79	13.79	13.79	14.39	15.93	17.63	18.39	19.36	20.46	21.15		23.01	24.60	25.65	26.67	28.35	29.95	30.54	32.96	32.79	34.56	35.21	36.55	37.59	38.89	40.60

# PROFIL LL

Echelle : 1/250

+0.94

0.00 NGF

Echelle en X : 1/100

Echelle en Y : 1/100

PC : -14.00 m

Altitudes FOND MARIN	
Abscisses FOND MARIN	
Altitudes SUBSTRATUM	3.47
Abscisses SUBSTRATUM	0.000 4.036 6.500 8.208 13.784 18.693 18.924 19.792 20.204 21.383 24.674 25.214 26.941 27.860 29.115 30.243 31.027 32.224 33.202 34.281 35.246 36.075 36.884 37.525
Epaisseur sable	



# PROFIL NN

Echelle : 1/250

+0.91

0.00 NGF

Echelle en X : 1/100

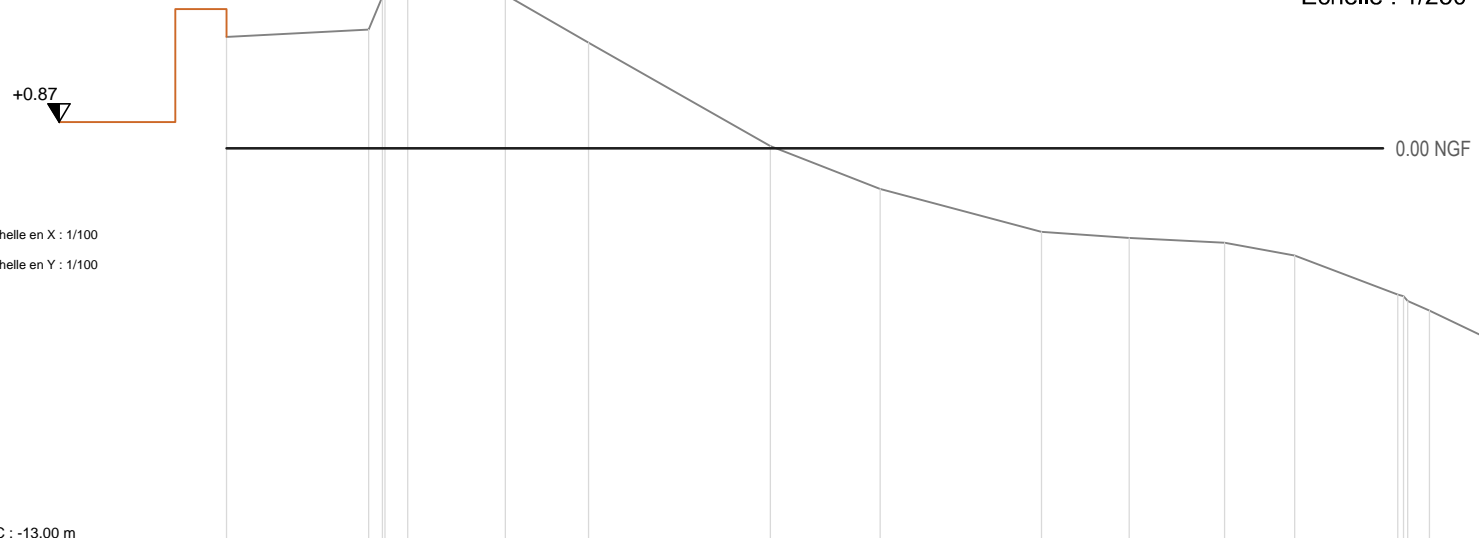
Echelle en Y : 1/100

PC : -13.00 m

Altitudes FOND MARIN																			
Abscisses FOND MARIN																			
Altitudes SUBSTRATUM	3.27	3.47	3.14	3.04	2.82	2.53	2.15	1.81	1.4	1.02	0.72	0.42	0.12	-0.18	-0.48	-0.78	-1.08	-1.38	-1.68
Abscisses SUBSTRATUM	0.00	4.34	8.68	13.02	17.36	21.70	26.04	30.38	34.72	39.06	43.40	47.74	52.08	56.42	60.76	65.10	69.44	73.78	78.12
Epaisseur sable																			

# PROFIL 00

Echelle : 1/250



Echelle en X : 1/100  
 Echelle en Y : 1/100

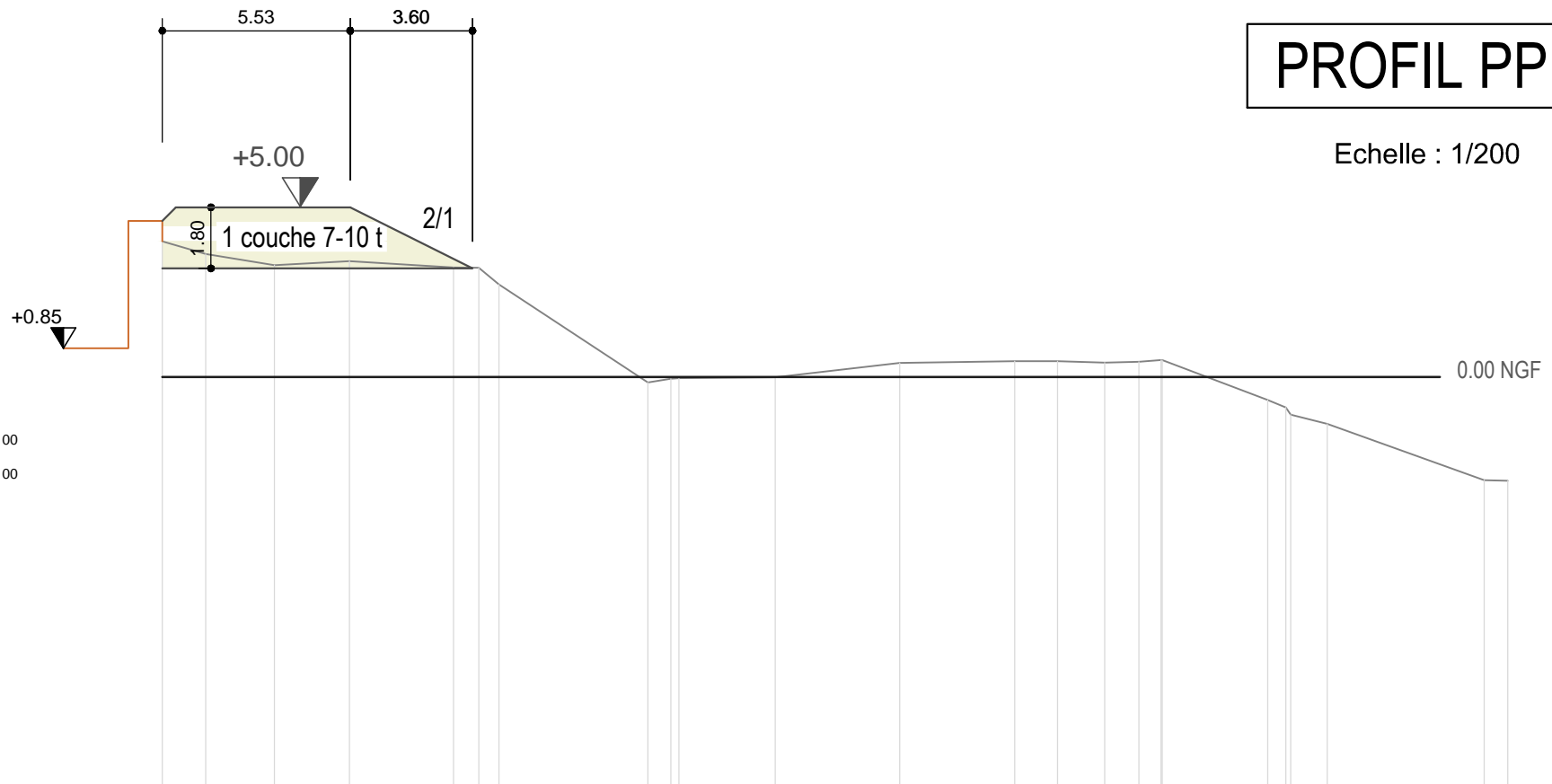
PC : -13.00 m

Altitudes FOND MARIN	
Abscisses FOND MARIN	
Altitudes SUBSTRATUM	
Abscisses SUBSTRATUM	0.000 1.88 4.693 3.92 8.297 8.20 9.885 9.19 9.272 9.08 11.099 9.49 17.977 9.08 21.608 -1.34 26.842 -2.77 29.844 -2.97 32.096 -3.12 34.216 -3.26 36.214 -4.83 39.789 -6.37 41.729 -6.31
Epaisseur sable	



# PROFIL PP

Echelle : 1/200



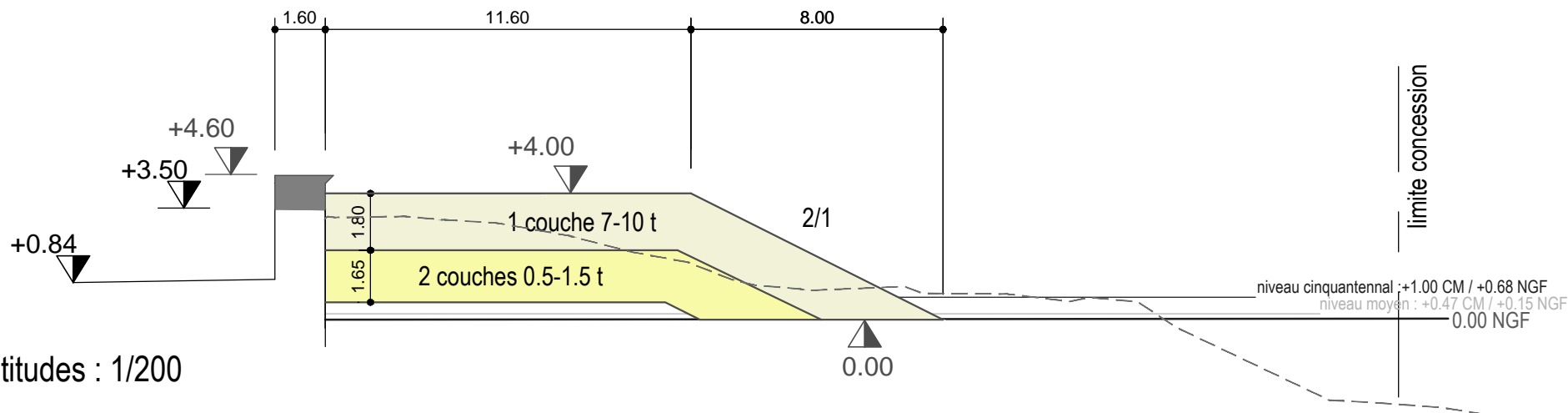
Echelle en X : 1/100

Echelle en Y : 1/100

PC : -12.00 m

Altitudes FOND MARIN	
Abscisses FOND MARIN	
Altitudes SUBSTRATUM	
Abscisses SUBSTRATUM	0000 339 1276 362 3106 329 5512 342 8873 323 9354 322 9912 273 14304 -0.16 14980 -0.05 18053 -0.00 21773 0.62 25104 0.67 26360 0.67 27755 0.62 28764 0.65 29415 0.50 32550 -0.67 33669 -0.90 34306 -1.38 38932 -3.04 39625 -3.05
Epaisseur sable	

# Profil QQ1



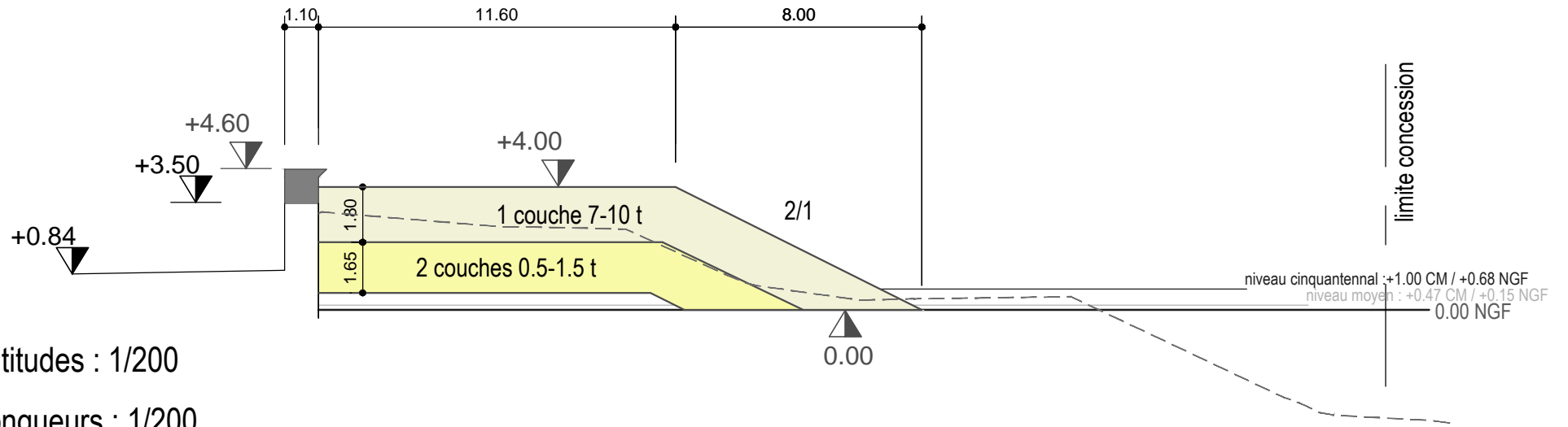
Echelle des altitudes : 1/200

Echelle des longueurs : 1/200

PC : -10.00 m

Altitudes TN (NGF)	-16.75	3.19	-14.19	3.24	-12.95	3.13	-11.33	3.03	-9.35	2.69	-7.01	2.11	-5.23	1.78	-3.85	1.23	-3.08	1.05	-2.19	0.98	-1.46	0.89	1.63	1.02	0.80	4.91	0.78	6.85	0.54	7.49	0.67	8.50	0.58	9.03	0.53	10.20	-0.25	15.10	-2.59	16.34	-2.65	18.69	-2.82	20.00	-3.03
Distances à l'axe TN	-16.75	3.19	-14.19	3.24	-12.95	3.13	-11.33	3.03	-9.35	2.69	-7.01	2.11	-5.23	1.78	-3.85	1.23	-3.08	1.05	-2.19	0.98	-1.46	0.89	1.63	1.02	0.80	4.91	0.78	6.85	0.54	7.49	0.67	8.50	0.58	9.03	0.53	10.20	-0.25	15.10	-2.59	16.34	-2.65	18.69	-2.82	20.00	-3.03

# Profil QQ2



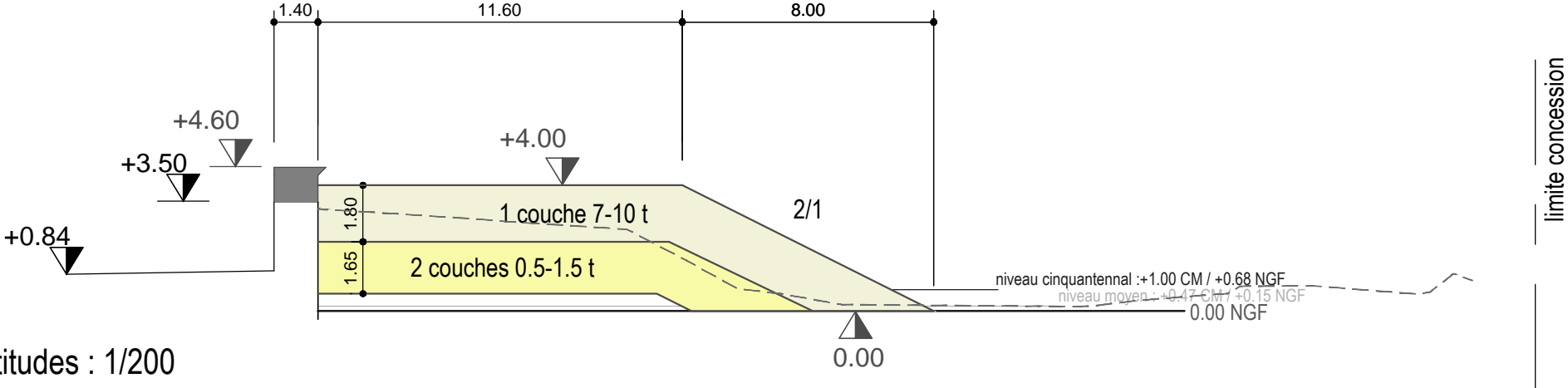
Echelle des altitudes : 1/200

Echelle des longueurs : 1/200

PC : -10.00 m

Altitudes TN (NGF)	3.13	2.76	2.70	2.70	2.62	1.15	0.84	0.36	0.43	-2.84	-3.60	-3.68
Distances à l'axe TN	-16.75	-11.51	-10.76	-9.89	-6.77	-3.54	0.84	2.59	7.70	14.59	15.30	16.21

# Profil QQ3



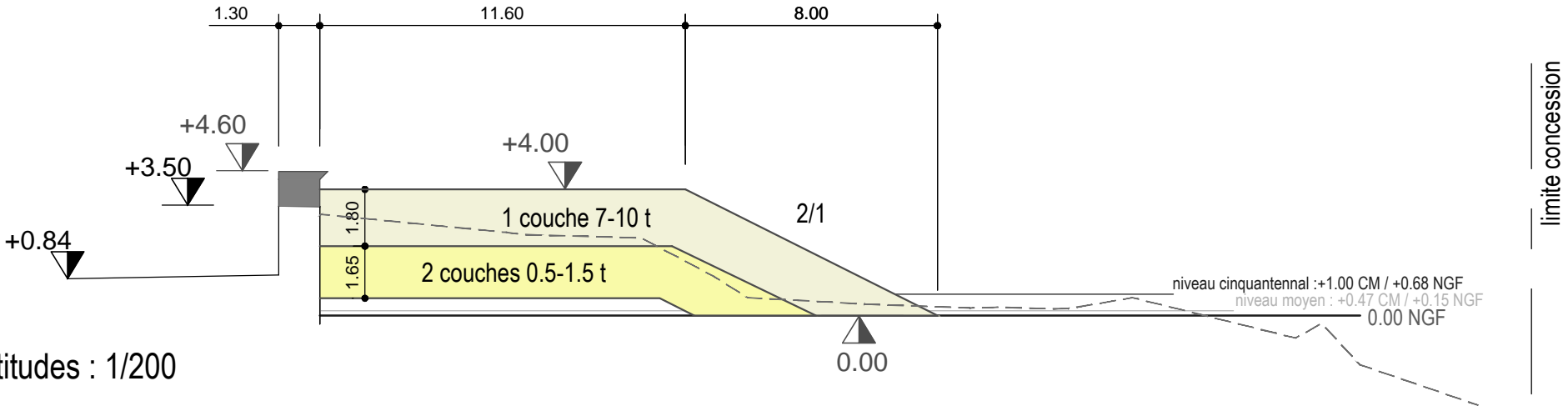
Echelle des altitudes : 1/200

Echelle des longueurs : 1/200

PC : -10.00 m

Altitudes TN (NGF)	-16.75	3.23	3.16	-11.50	2.91	-10.62	2.84	-6.92	2.60	-5.02	1.61	-3.40	0.71	-1.93	0.53	-0.09	0.20	6.21	0.15	7.83	0.15	9.37	0.33	11.91	0.53	12.62	0.79	14.97	0.80	18.23	0.54	19.40	1.19	20.00	0.97
Distances à l'axe TN	-16.75	3.23	3.16	-11.50	2.91	-10.62	2.84	-6.92	2.60	-5.02	1.61	-3.40	0.71	-1.93	0.53	-0.09	0.20	6.21	0.15	7.83	0.15	9.37	0.33	11.91	0.53	12.62	0.79	14.97	0.80	18.23	0.54	19.40	1.19	20.00	0.97

# Profil QQ4



Echelle des altitudes : 1/200

Echelle des longueurs : 1/200

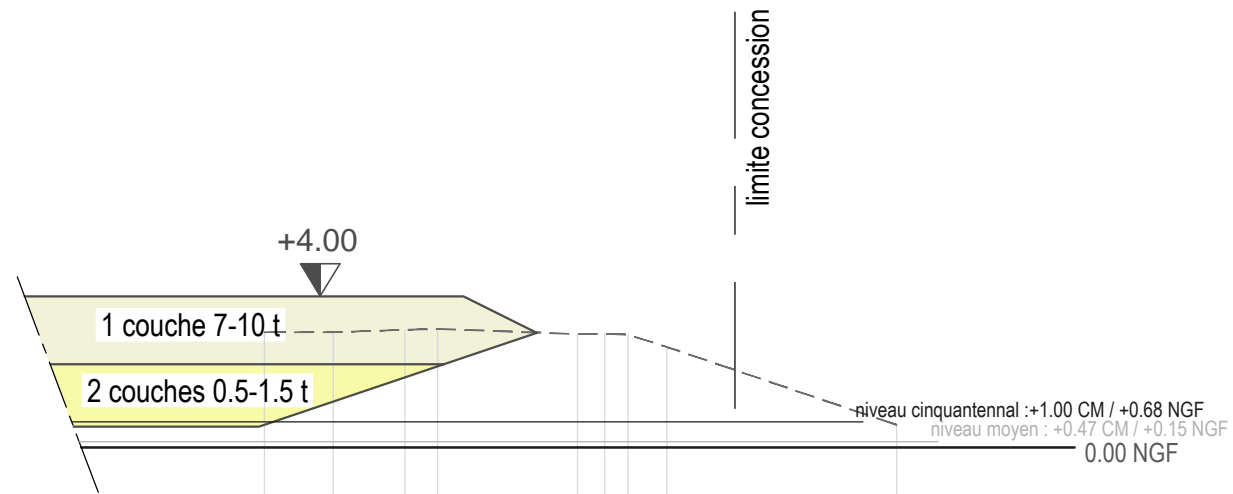
PC : -10.00 m

Altitudes TN (NGF)	-16.75	3.18	-10.81	2.64	2.46	1.24	0.56	0.48	0.36	0.24	0.22	0.57	-0.71	-2.84		
Distances à l'axe TN	-10.81	-9.82	-6.54	-4.23	-3.17	-1.59	0.53	2.87	4.82	6.39	7.00	9.05	14.21	15.04	16.25	20.00





# Profil QQ7



Echelle des altitudes : 1/200

Echelle des longueurs : 1/200

PC : -10.00 m

Altitudes TN (NGF)	3.05	3.05	3.11	3.13	3.00	3.01	2.98	2.66	0.60
Distances à l'axe TN	0.000	1.817	3.717	4.576	8.278	8.997	9.614	10.640	16.717





# COUPE RR2

Echelle : 1/100

