

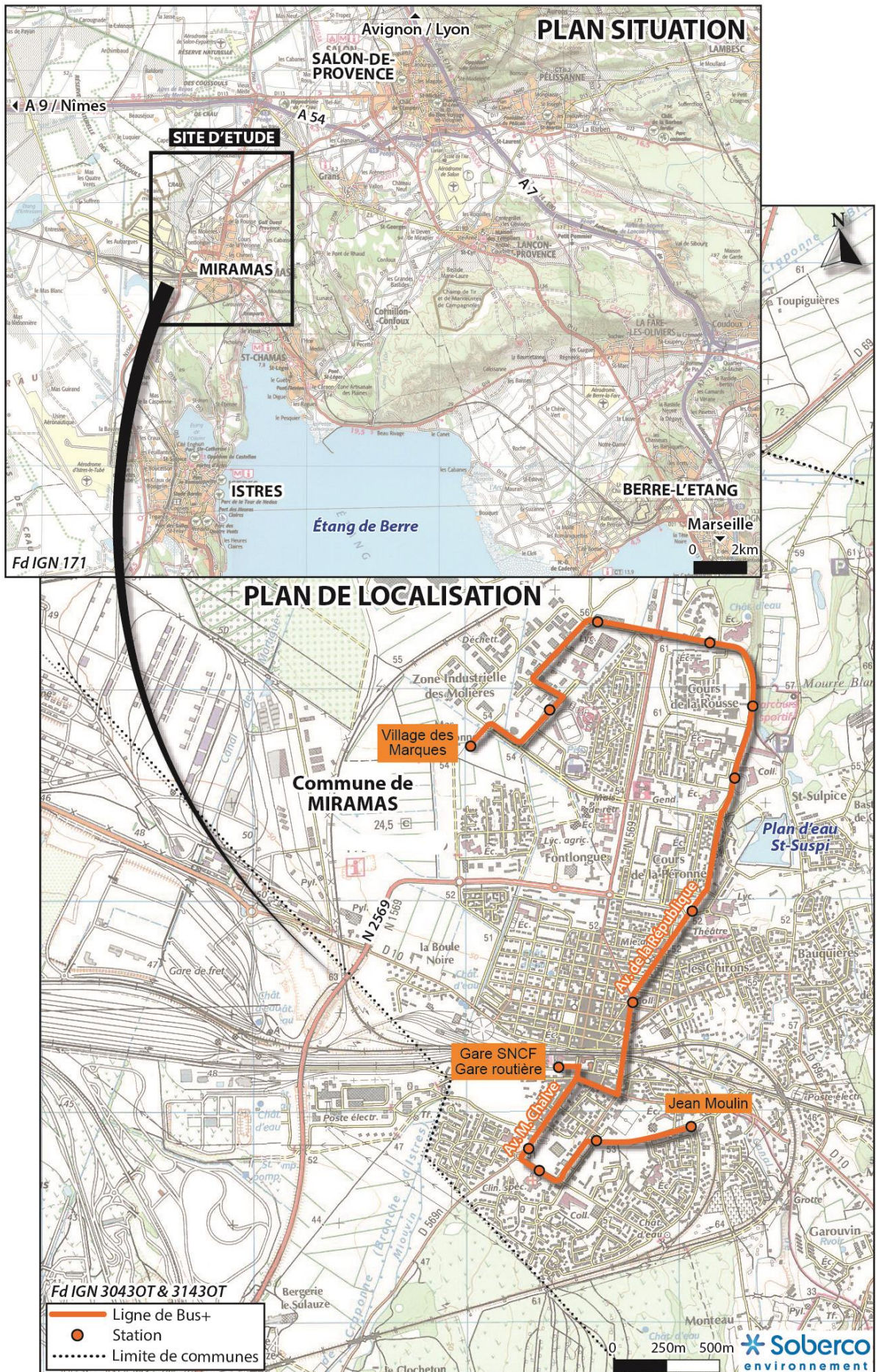
# METROPOLE AIX-MARSEILLE- PROVENCE

## ANNEXES DU CAS PAR CAS DU PROJET D'AMENAGEMENT DU BUS A HAUT NIVEAU DE SERVICE LEBUS+ A MIRAMAS



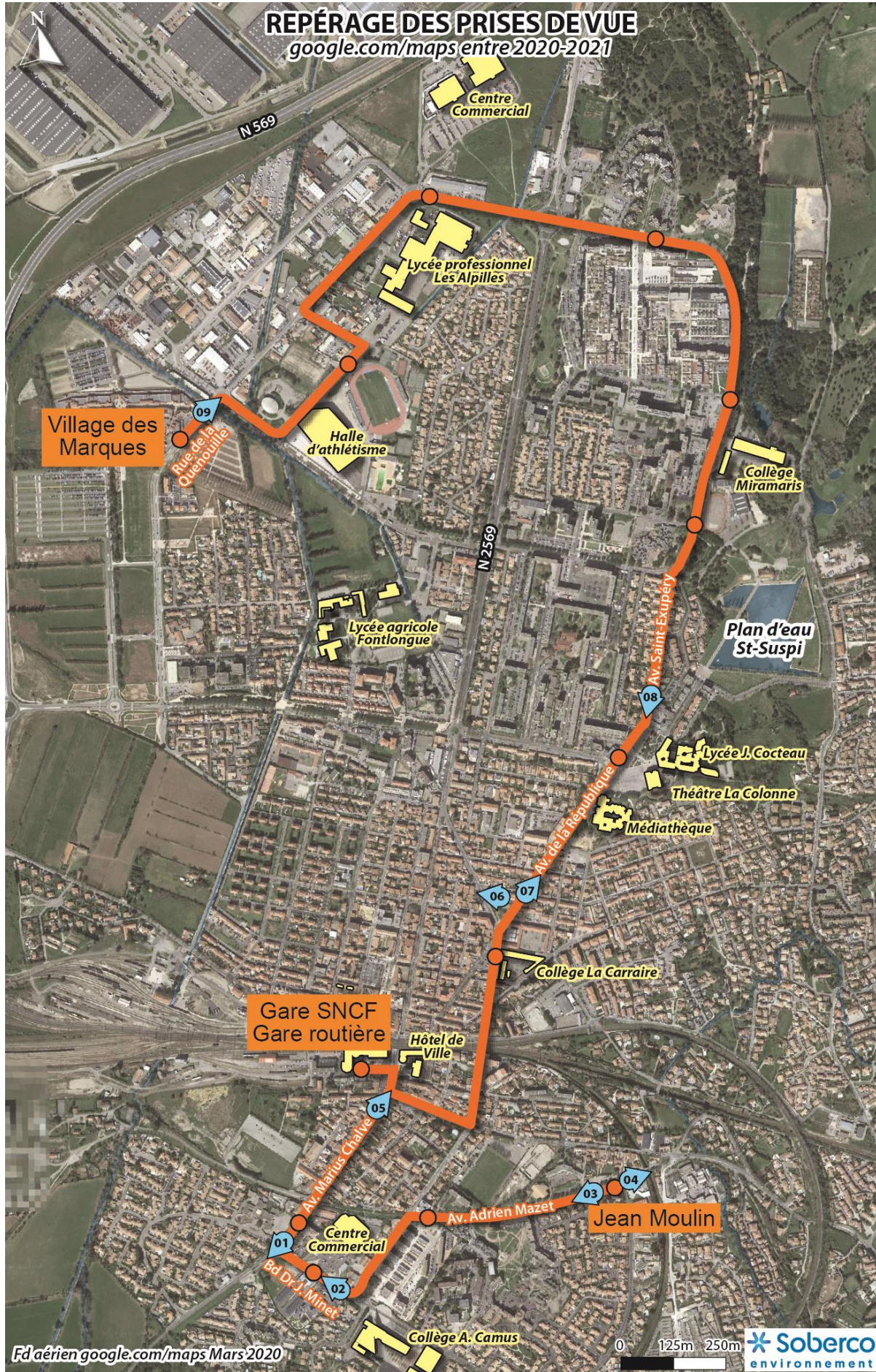


ANNEXE 2 :





ANNEXE 3





ANNEXE 4

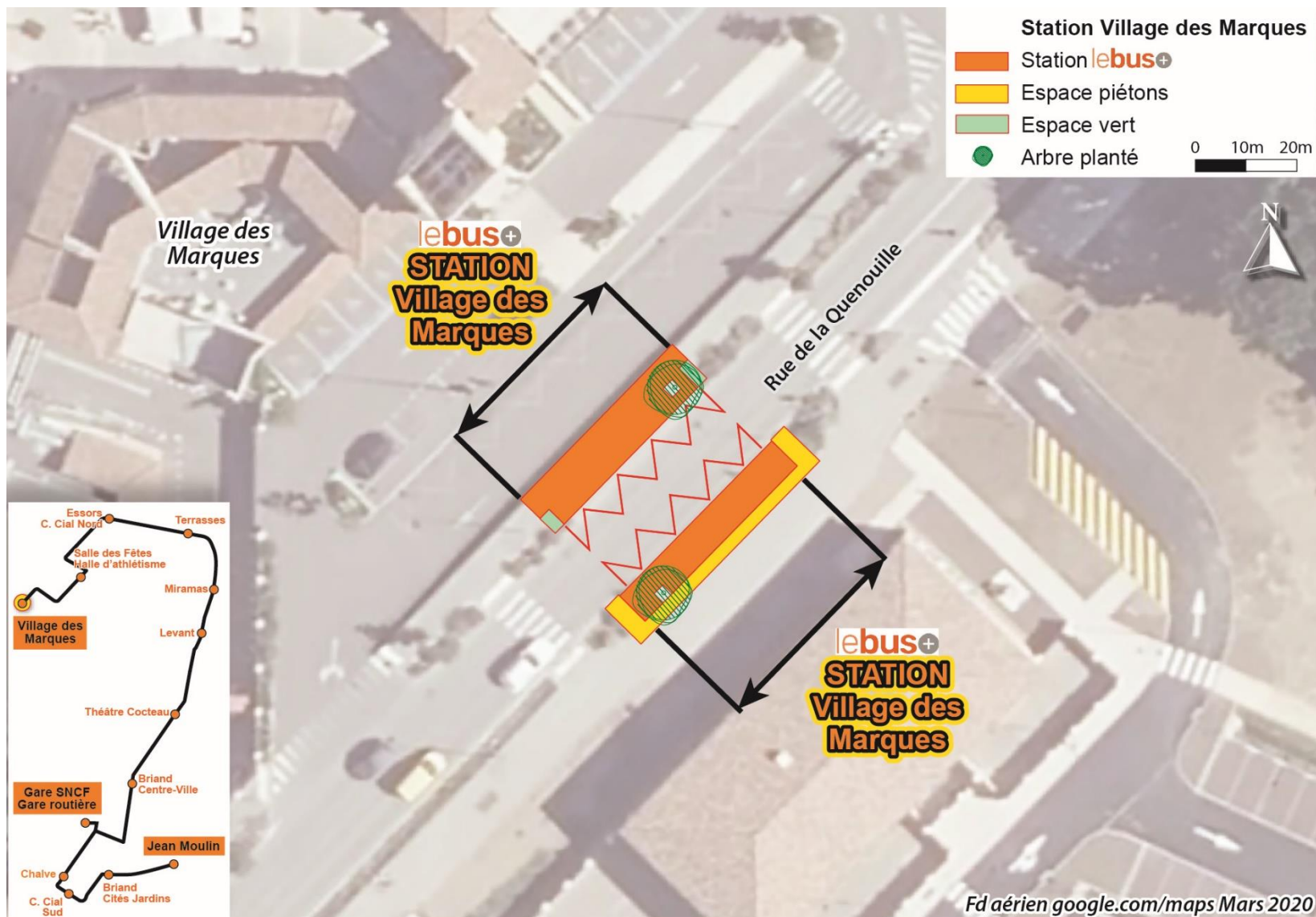




ANNEXE 5







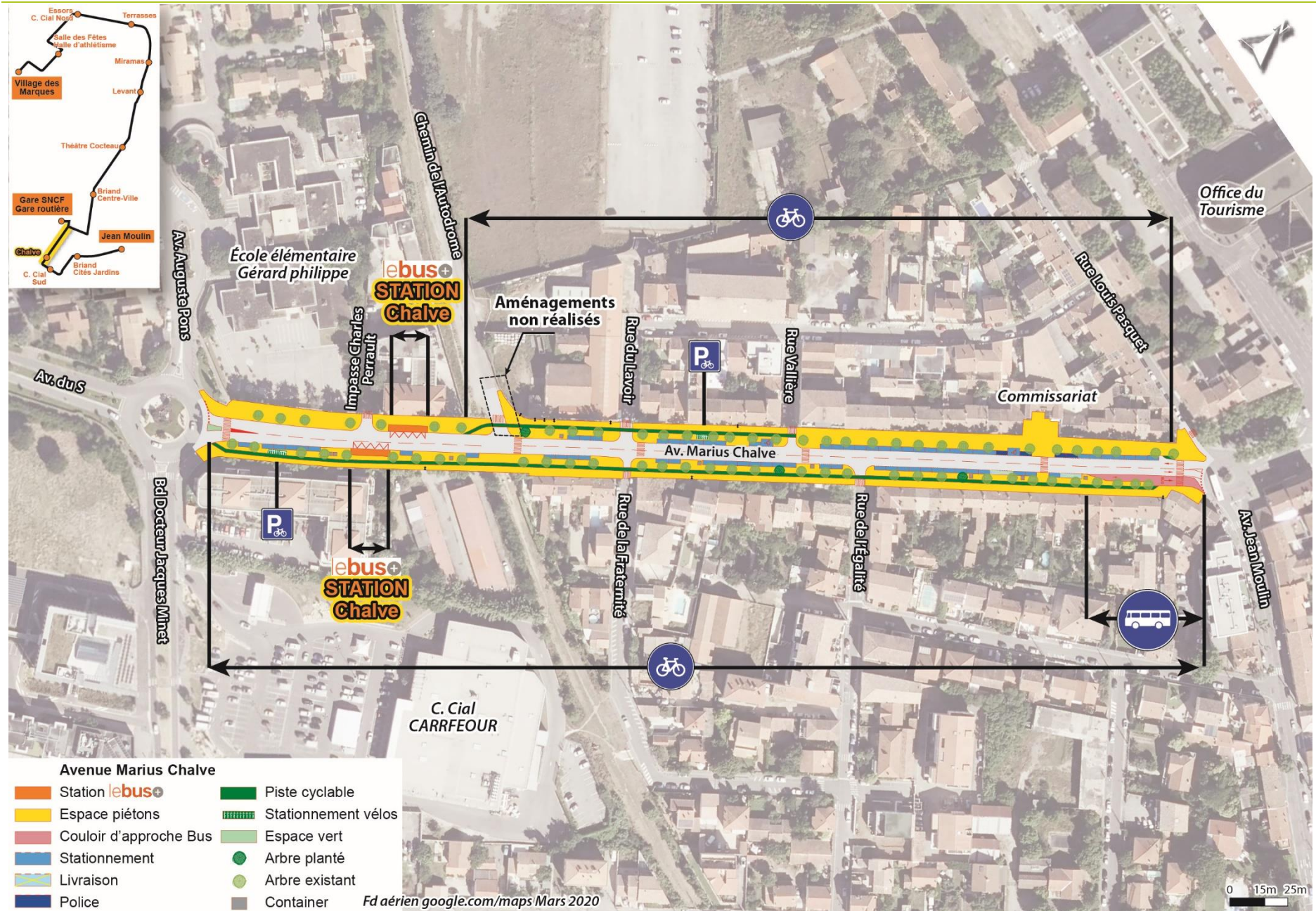




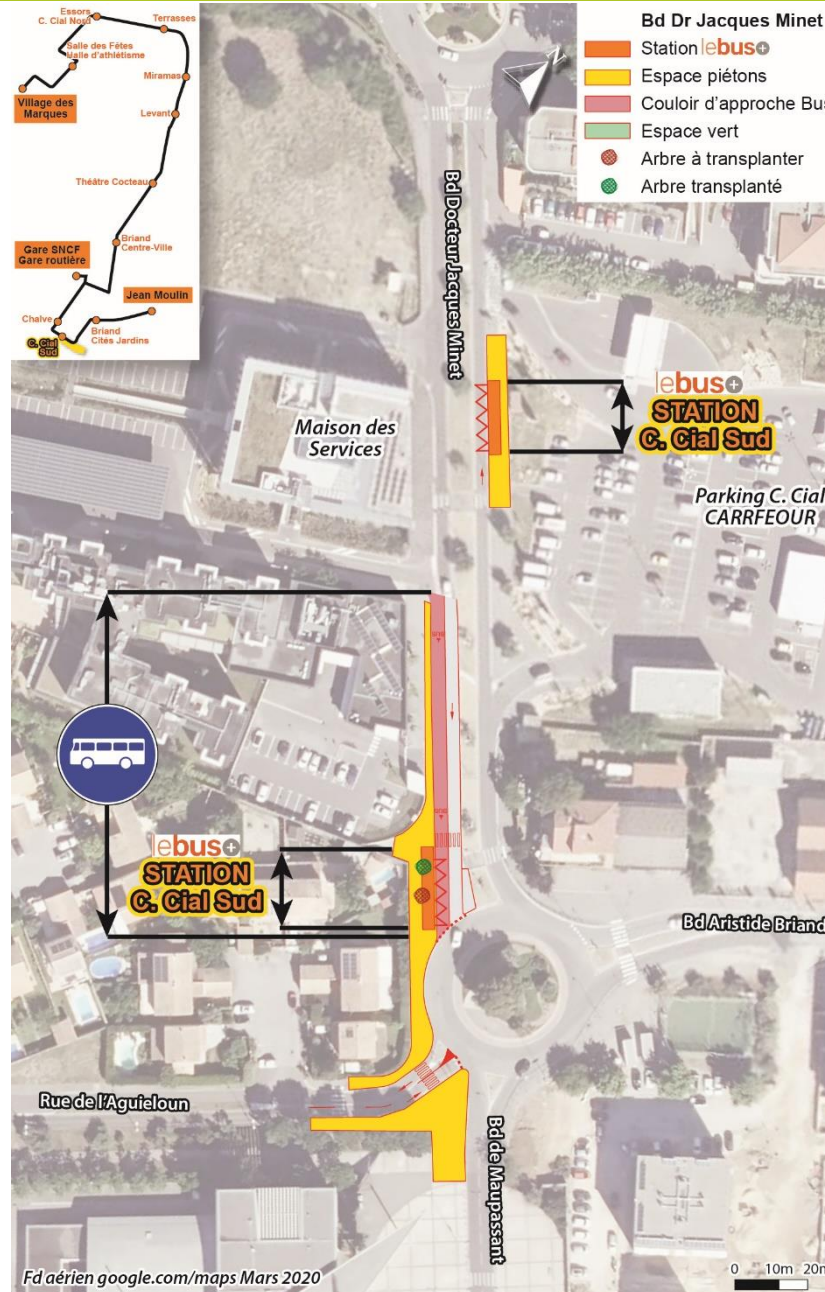




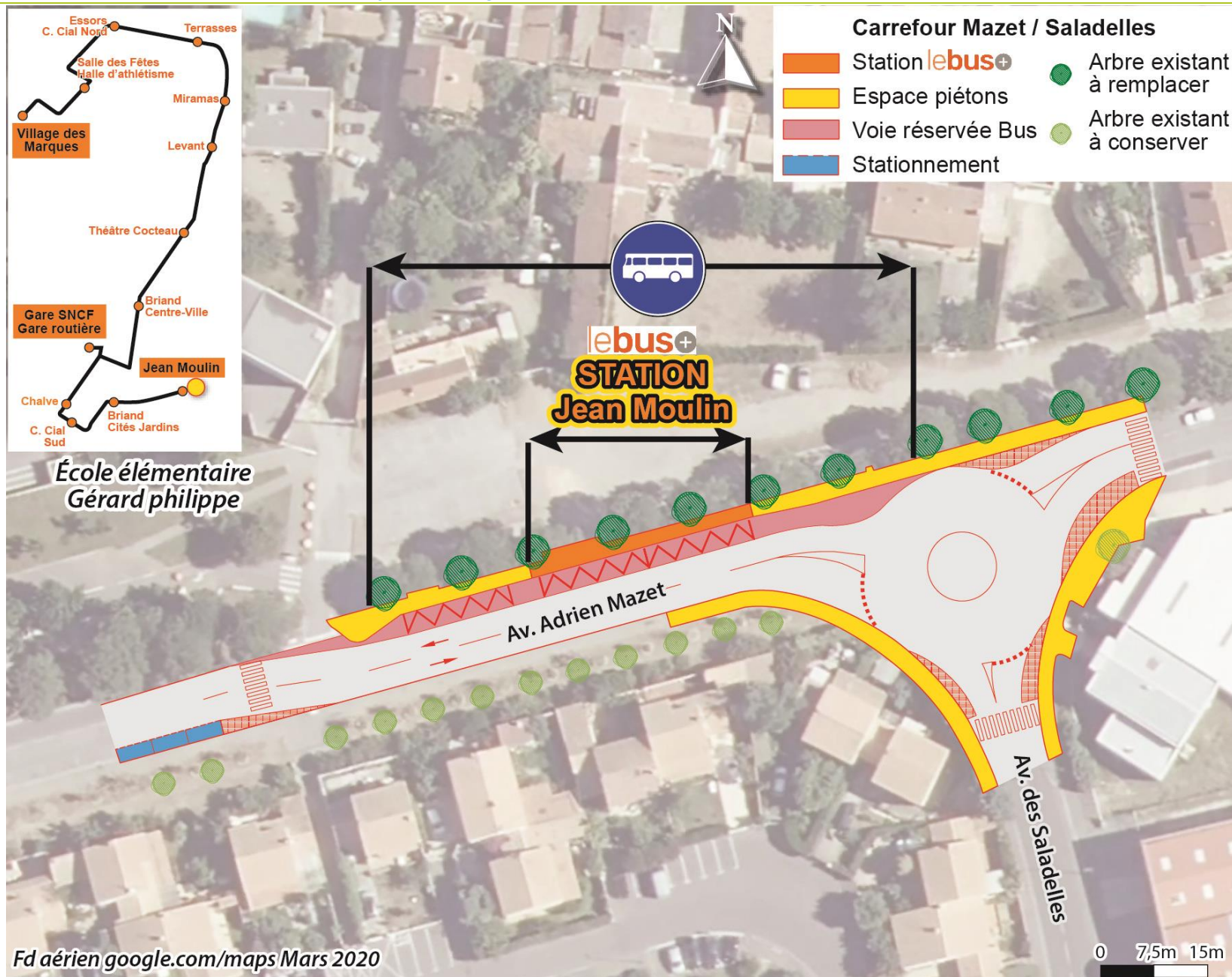






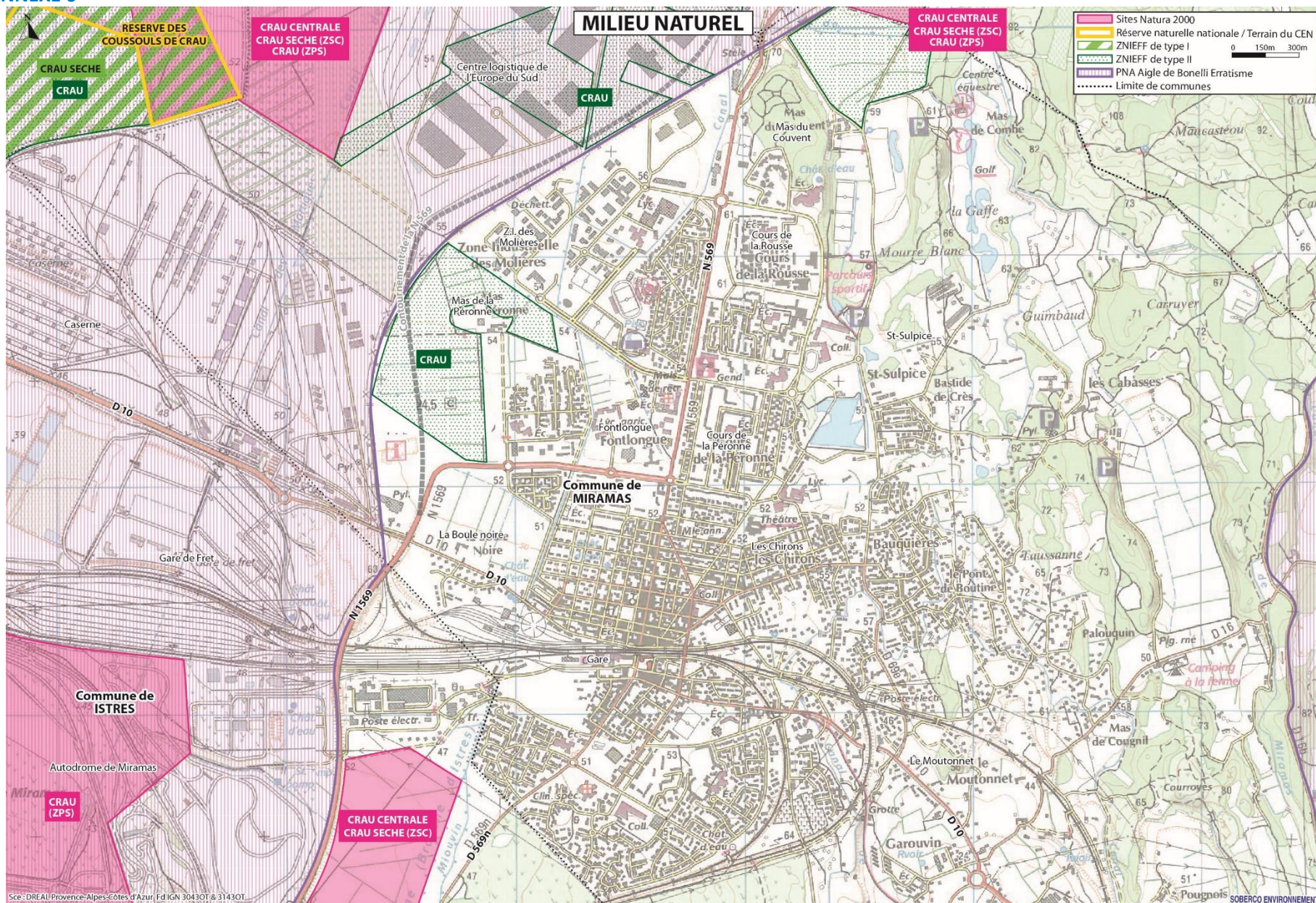








ANNEXE 6





 **Soberco**  
environnement  
INGÉNIERIE & CONSEILS

3 chemin de Taffignon, 69630 Chaponost  
04 78 51 93 88 • [www.soberco-environnement.fr](http://www.soberco-environnement.fr)

SARL au capital de 50000 euros  
Siret 405 144 544 00013  
R.C. Lyon b405 144 544 • APE 742C

 **OPQIBI**  
L'INGÉNIERIE QUALIFIÉE