



Demande d'examen au cas par cas Projet d'ombrières photovoltaïques

Aqualand Sainte Maxime

ANNEXES

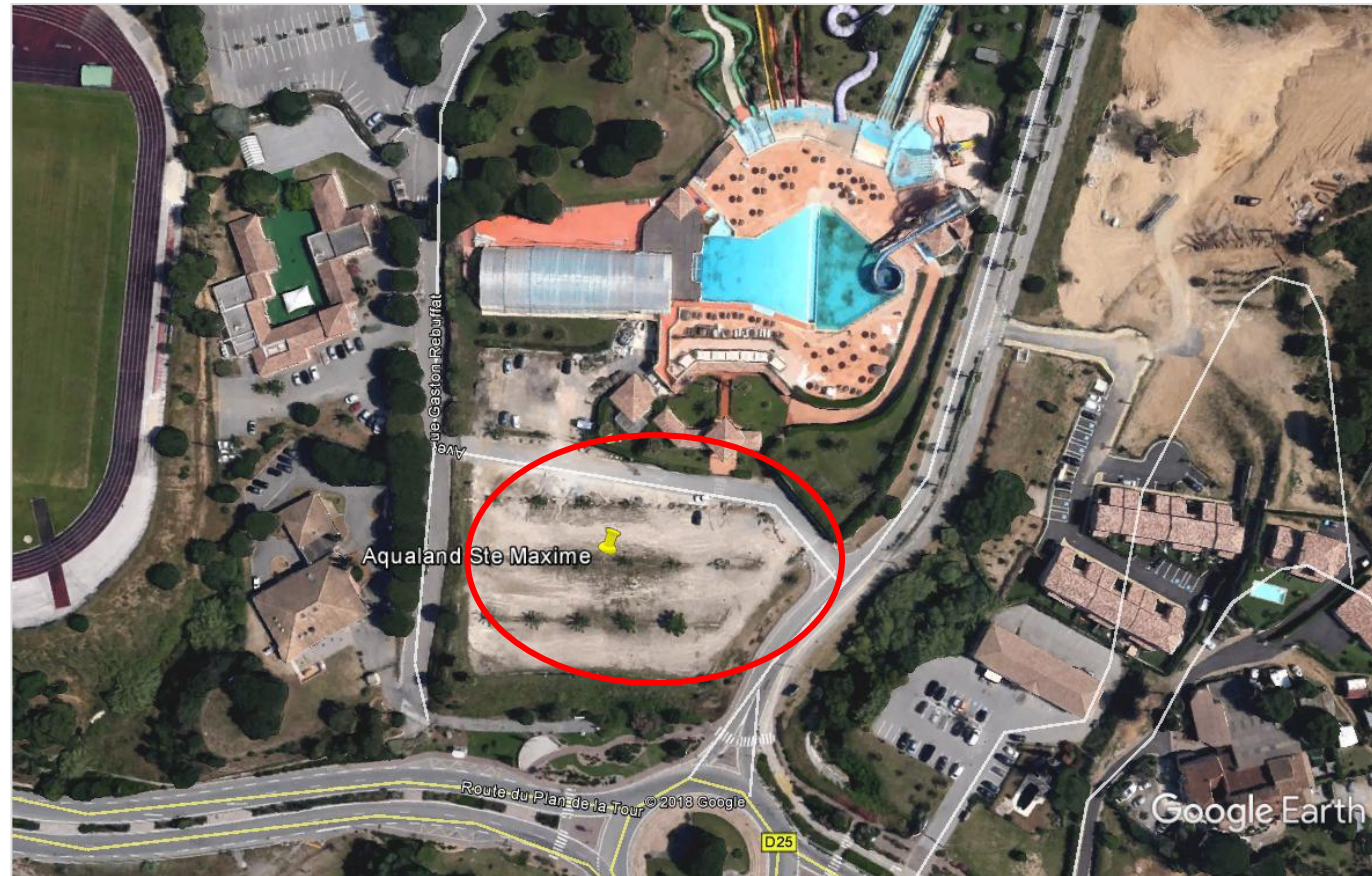
 **URBASOLAR**
"Solar energy for a green planet"



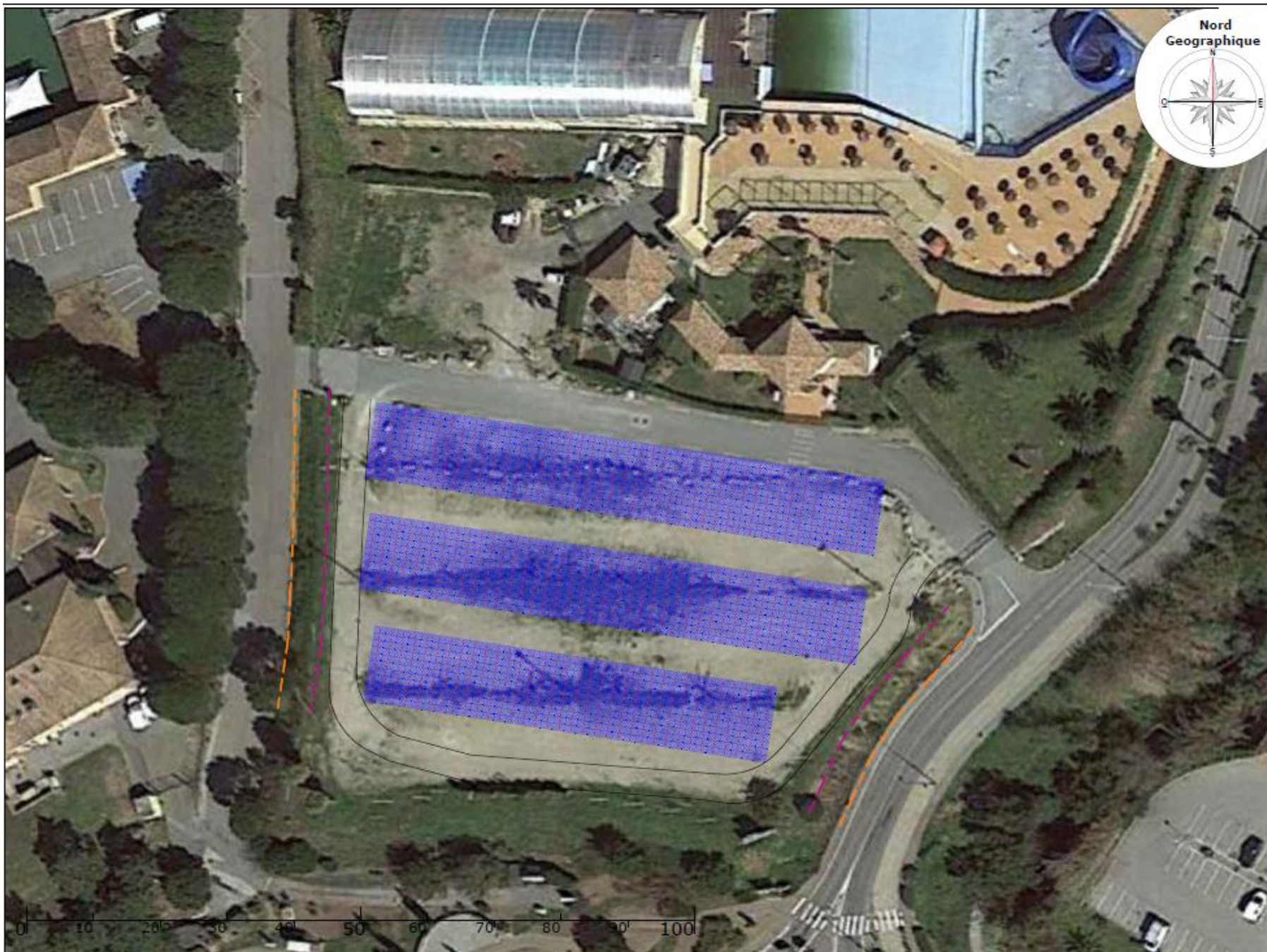
- Plan cadastral:



Section B 03 – Parcelle n° 3325
Sainte Maxime (83)







Emprise au sol :
 $\pm 2\,400\text{ m}^2$





URBASOLAR
"Solar energy for a green planet"

