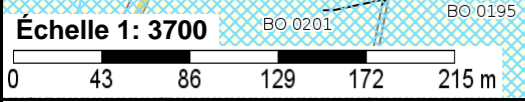
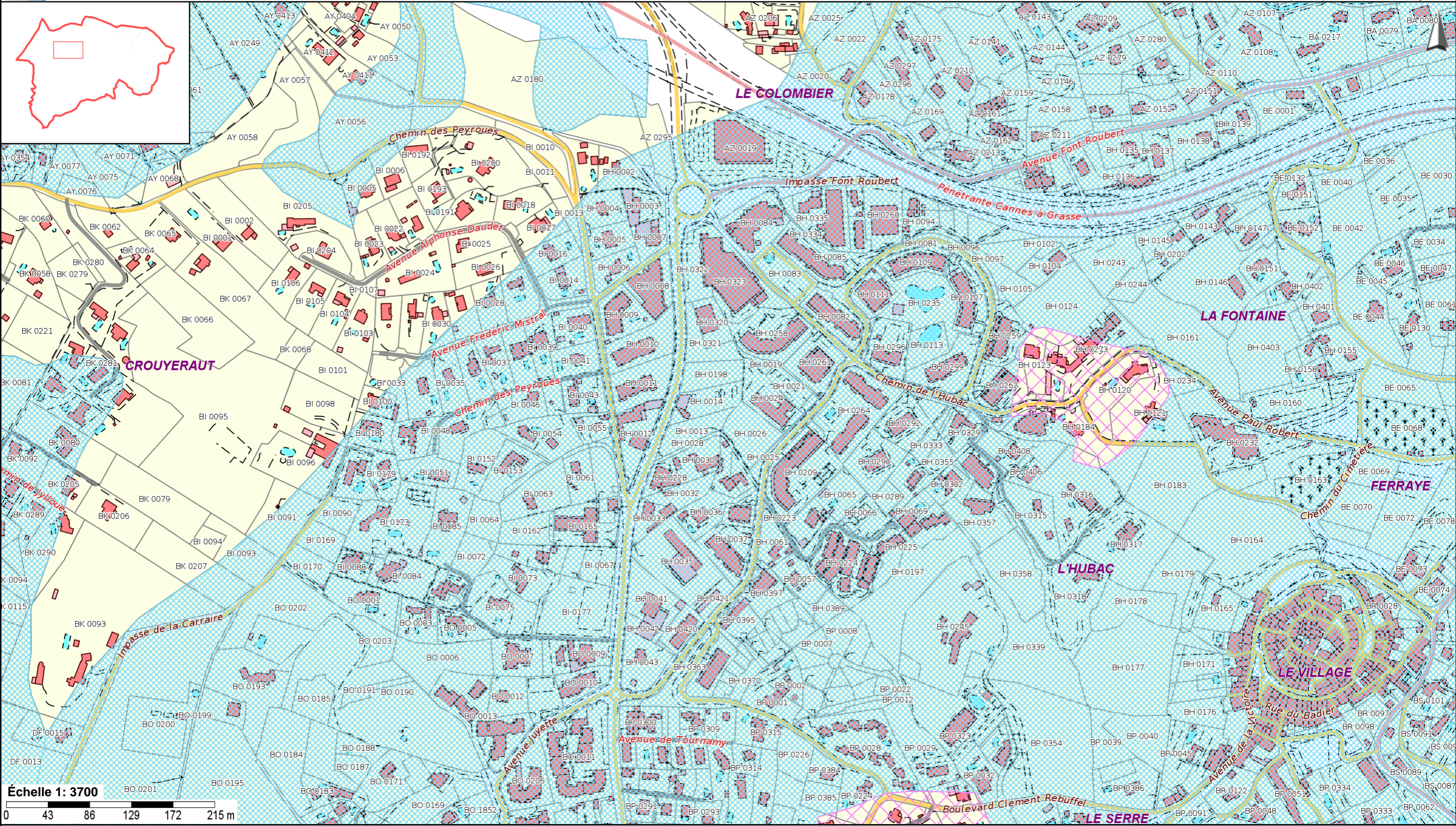





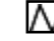



Carte présentée pour information, sans valeur réglementaire.



- Cadastre**
- Parcelles
- Batiments**
- Bâtiment en dur
 - Construction légère

Risques-Nuisances

ALEA Géologique Zone 1:Constructibilité nulle Zone L2:Zone d'aléa limité Zone 2:Constructibilité faible Zone LG2Ra2:Zone d'aléa de glissement et de ravinement d'intensité moyenne Zone 3:Constructibilité faible à moyenne Zone NE:Zone non exposée Zone L1:Zone d'aléa limité